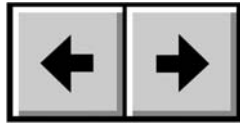
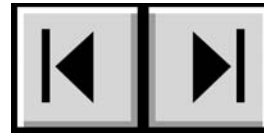


How To Use This Manual

In the toolbar:



Previous Page / Next Page



Go to Beginning / Go to End

Printing:

While optimized for onscreen viewing, the pages of this manual are formatted for printing on 8 1/2" x 11" and A4 sized paper, giving you the option to print the entire manual or just a specific page or section.

To Exit:

From the Menu bar at the top of your screen, select: File > Quit.

Icons Used In This Manual

Italicized paragraphs feature an icon describing the type of information being given.



Important Info: *This icon refers to an important step that must be followed.*



Tech Note: *This icon refers to tips to help maximize performance.*



Caution! *This icon indicates a potential hazard, and gives tips on how to avoid them.*

Foreword	5
Health, Safety and General Use Precautions	7
1. Introduction	8
1.1. What Your LaCie Ethernet Disk Can Do	8
2. Your LaCie Ethernet Disk	9
2.1. Minimum System Requirements	9
2.2. Package Contents	9
2.3. Front Panel	10
2.4. Back Panel	11
3. Setting Up Your LaCie Ethernet Disk	12
3.1. Stand-alone Installation	12
3.2. Rack Installation	12
4. Installing Your LaCie Ethernet Disk	13
4.1. Connecting The LaCie Ethernet Disk To Your Network	13
4.2. Turning On Your LaCie Ethernet Disk	13
5. Configuring Your LaCie Ethernet Disk	14
5.1. Installing The LaCie Network Configurator	14
5.1.1. Windows Users	14
5.1.2. Mac OS 9.x Users	14
5.1.3. Mac OS 10.x Users	15
5.1.4. UNIX Users	15
5.2. Assigning A Network (IP) Address Using The LaCie Network Configurator	16
6. Accessing Your Ethernet Disk Over The Network	18
6.1. Windows Users	18
6.1.1. Windows Me, Windows 2000 And Windows XP	18
6.1.2. Windows 95, Windows 98 And Windows NT	19
6.2. Mac Users	19
6.2.1. Mac OS 9.x	19
6.2.2. Mac OS 10.x	19
6.3. UNIX Users	19
6.4. Connecting Via HTTP Or FTP	20
6.5. Connecting With An FTP Client	20

7. Using The Web Administration Page	21
7.1. Accessing The Web Administration Page	21
7.2. Wizard And Advanced Modes	22
7.3. Using The Wizard Mode	22
7.3.1. Creating A Share: "Share Name"	22
7.3.2. Username	23
7.3.3. Confirmation	23
7.3.4. Set-up Complete	24
7.4. Using The Advanced Mode	24
7.4.1. Changing The Name And Location Of The LaCie Ethernet Disk	24
7.4.1.1. Changing The Name	24
7.4.1.2. Moving From A Workgroup To A Domain	25
7.4.2. Setting The Date And Time Of Your LaCie Ethernet Disk	25
7.4.3. Sharing Your LaCie Ethernet Disk In Advanced Mode	26
7.4.3.1. Creating Users	26
7.4.3.2. Creating Groups	26
7.4.3.3. Creating Shares	27
7.5. Shutting Down The Ethernet Drive	28
8. Advanced Management Of Users, Groups And Shares	29
8.1. Listing Local Users	29
8.1.1. Creating A User	29
8.1.2. Editing A User	30
8.1.3. Deleting A User	30
8.2. Listing Local Groups	30
8.2.1. Creating A Group	30
8.2.2. Editing A Group	31
8.2.3. Deleting A Group	31
8.3. Listing Local Shares	32
8.3.1. Creating A Share	32
8.3.2. Editing A Share	32
8.3.3. Deleting A Share	32
8.3.4. Deleting A Broken Share	32

9. Customizing Your LaCie Ethernet Disk	33
9.1. Checking Your Server Configuration	33
9.2. Checking The Administrator's Password	34
9.3. Enabling/Disabling Guest Accounts	34
9.4. Rebooting Your Server	35
9.5. Shutting Down Your Server	35
9.6. Changing Your Network Configuration	36
9.7. Formatting Your Disk	37
9.8. Defragmenting Your Disks	38
9.9. Backing Up Your Disks Using The Included Backup Program	39
9.9.1. Backing Up With The Included Backup Program	39
9.9.2. Recovering Files Using The Included Backup Program	40
9.10. Backing Up Your Disks Using Third-party Software Programs	43
9.11. Uploading A New Version Of The System Software	43
9.12. Restoring Your LaCie Ethernet Disk	43
10. Expanding Your LaCie Ethernet Disk	45
10.1. Adding Additional Storage Space	45
11. Using the LaCie Shell	46
11.1. Accessing the LaCie Shell using Remote Desktop (Windows)	47
11.2. Accessing the LaCie Shell using Remote Desktop for Mac OS X	48
11.3. Firewall	49
11.4. Diagnostics	50
11.4.1. System Log	50
11.4.2. Information	50
11.4.3. Advanced	51
11.4.4. Backup and Restore	51
11.5. Logging Off The System via Remote Desktop (Windows and Macintosh)	52
12. Troubleshooting	53
13. Contacting Customer Support	57
14. Restoring Your Ethernet Disk Using The LaCie Restore CD	59
15. Warranty	61
Glossary	62

Copyrights

Copyright © 2004 LaCie. All rights reserved. No part of this publication may be reproduced, stored in a retrieval system, or transmitted in any form or by any means, electronic, mechanical, photocopying, recording or otherwise, without the prior written consent of LaCie.

Trademarks

Apple, Mac, and Macintosh are registered trademarks of Apple Computer, Inc. Microsoft, Windows NT, Windows 98, Windows 98 SE, Windows 2000, Windows Millennium Edition and Windows XP are registered trademarks of Microsoft Corporation. Sony and iLink are registered trademarks of Sony Electronics. Other trademarks mentioned in this manual are the property of their respective owners.

Changes

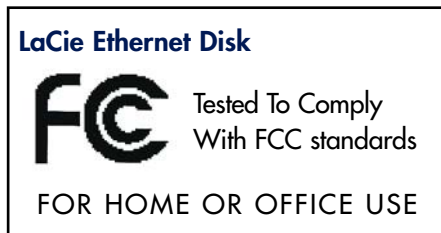
The material in this document is for information only and subject to change without notice. While reasonable efforts have been made in the preparation of this document to assure its accuracy, LaCie assumes no liability resulting from errors or omissions in this document, or from the use of the information contained herein. LaCie reserves the right to make changes or revisions in the product design or the product manual without reservation and without obligation to notify any person of such revisions and changes.

FCC Statement:



Caution! *Modifications not authorized by the manufacturer may void the user's authority to operate this device.*

NOTE: This equipment has been tested and found to comply with the limits for a Class A digital device, pursuant to Part 15 of the FCC Rules. These limits are designed to provide reasonable protection against harmful interference when the equipment is operated in a commercial environment. This equipment generates, uses, and can radiate radio frequency energy and, if not installed and used in accordance with the instruction manual, may cause harmful interference to radio communications. Operation of this equipment in a residential area is likely to cause harmful interference in which case the user will be required to correct the interference at his own expense.



NOTE: This equipment has been tested and found to comply with the limits for a Class B digital device, pursuant to Part 15 of the FCC Rules. These limits are designed to provide reasonable protection against harmful interference in a residential installation. This equipment generates, uses and can radiate radio frequency energy and, if not installed and used in accordance with the instructions, may cause harmful interference to radio communications. However, there is no guarantee that interference will not occur in a particular installation. If this equipment does cause harmful interference to radio or television reception, which can be determined by turning the equipment off and on, the user is encouraged to try and correct the interference by one or more of the following measures:

- Reorient or relocate the receiving antenna.
 - Increase the separation between the equipment and receiver.
 - Connect the equipment into an outlet on a circuit different from that to which the receiver is connected.
- Consult the dealer or an experienced radio/TV technician for help.

Canada Compliance Statement

This Class A digital apparatus meets all requirements of the Canadian Interference-Causing Equipment Regulations.

Manufacturer's Declaration for CE Certification

We, LaCie, solemnly declare that this product conforms to the following European standards:

 Class B EN60950, EN55022, EN50082-1, EN61000-3-2

With reference to the following conditions:

73/23/EEC Low Voltage Directive

89/336/EEC EMC Directive



This symbol on the product or on its packaging indicates that this product must not be disposed of with your other household waste. Instead, it is your responsibility to dispose of your waste equipment by handing it over to a designated collection point for the recycling of electrical waste and electronic equipment. The separate collection and recycling of your waste equipment at the time of disposal will help to conserve natural resources and ensure that it is recycled in a manner that protects human health and the environment. For more information about where you can drop off your waste equipment for recycling, please contact your local city office, your household waste disposal service or the shop where you purchased the product.

Health and Safety Precautions

Only qualified persons are authorized to carry out maintenance on this device.

- Read this User's Guide carefully, and follow the correct procedure when setting up the device.
- Do not open your LaCie Ethernet Disk or attempt to disassemble or modify it. Never insert any metallic object into the drive to avoid any risk of electrical shock, fire, short-circuiting or dangerous emissions. Your LaCie Ethernet Disk contains no user-serviceable parts. If it appears to be malfunctioning, have it inspected by a qualified LaCie Technical Support representative.
- Never expose your device to rain, or use it near water, or in damp or wet conditions. Never place objects containing liquids on the LaCie Ethernet Disk, as they may spill into its openings. Doing so increases the risk of electrical shock, short-circuiting, fire or personal injury.
- Make sure that the computer and LaCie Ethernet Disk are electrically grounded. If the devices are not grounded, there is an increased risk of electrical shock.

General Use Precautions:

- Do not expose the LaCie Ethernet Disk to temperatures outside the range of 5° C to 35° C (41° F to 95° F). Doing so may damage the LaCie Ethernet Disk or disfigure its casing. Avoid placing your LaCie Ethernet Disk near a source of heat or exposing it to sunlight (even through a window). Inversely, placing your LaCie Ethernet Disk in an environment that is too cold or humid may damage the unit.
- Always unplug the LaCie Ethernet Disk from the electrical outlet if there is a risk of lightning or if it will be unused for an extended period of time. Otherwise, there is an increased risk of electrical shock, short-circuiting or fire.
- Use only the power supply shipped with the device.
- Do not use the LaCie Ethernet Disk near other electrical appliances such as televisions, radios or speakers. Doing so may cause interference which will adversely affect the operation of the other products.
- Do not place the LaCie Ethernet Disk near sources of magnetic interference, such as computer displays, televisions or speakers. Magnetic interference can affect the operation and stability of your LaCie Ethernet Disk.
- Do not place heavy objects on top of the LaCie Ethernet Disk or use excessive force on it.
- Never use excessive force on your LaCie Ethernet Disk. If you detect a problem, consult the [12. Troubleshooting](#) section in this manual.
- Protect your LaCie Ethernet Disk from excessive exposure to dust during use or storage. Dust can build up inside the device, increasing the risk of damage or malfunction.
- Never use benzene, paint thinners, detergent or other chemical products to clean the outside of the LaCie Ethernet Disk. Such products will disfigure and discolor the casing. Instead, use a soft, dry cloth to wipe the device.



Caution! *The LaCie Ethernet Disk's warranty may be void as a result of the failure to respect the precautions listed above.*

1. Introduction

Share information across diverse platforms, over a network or over the Web. The LaCie Ethernet Disk is the first hard drive that can be connected to a network, without any technical expertise. You'll be able to easily communicate by sharing content with others over a network to collaborate on multiple projects for greater workgroup productivity. Just plug the LaCie Ethernet Disk to any Ethernet, or Gigabit Ethernet, port and start sharing the disk among as many as 25 users at the same time*.



Tech Note: While the LaCie Ethernet Disk supports 25 users connected simultaneously, it is highly recommended that not all 25 users transfer files at the same time because this may cause the system to become overloaded. LaCie recommends that no more than 10 users transfer files at the same time. Gigabit speeds available only on models with Gigabit Ethernet port.

Open a new world of connectivity and flexible information management by instantly adding storage space to users on a network, and expand the capacity by simply daisy-chaining additional Hi-Speed USB 2.0 hard drives. Powered by Windows XP® Embedded, the LaCie Ethernet Disk is affordable, secure and compatible with all platforms, including Windows, Mac, Linux and UNIX.

The LaCie Ethernet Disk was designed to easily integrate into any environment. Engineered to be rack mountable, you can quickly and easily place the LaCie Ethernet Disk into your standard 19-inch computer equipment racks, or if you prefer seamlessly incorporate it into workstation configurations as a stand-alone or stackable device.

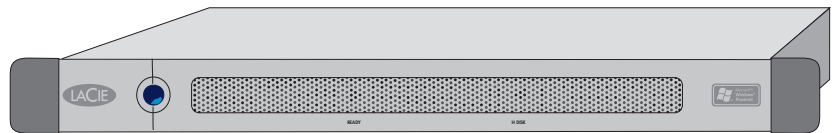
With all it can do for you, we're confident that your LaCie Ethernet Disk will quickly become an important tool in your day-to-day business and personal computing.

1.1. What Your LaCie Ethernet Disk Can Do

- Economically add storage over the network
- Offer extra security for your files
- Allow you to share files among several users
- Improve the availability of your files



Important Info: Any loss, corruption or destruction of data while using a LaCie drive is the sole responsibility of the user, and under no circumstances will LaCie be held liable for the recovery or restoration of this data. To help prevent the loss of your data, LaCie highly recommends that you keep **two** copies of your data; one copy on your external hard drive, for instance, and a second copy either on your internal hard drive, another external hard drive or some other form of removable storage media, such as CD, DVD or Tape. LaCie offers a complete line of CD, DVD and Tape drives, and if you would like more information on backup, please refer to the LaCie white paper on backup methods and technology.



2. Your LaCie Ethernet Disk

2.1. Minimum System Requirements

Client's Minimum Requirements:

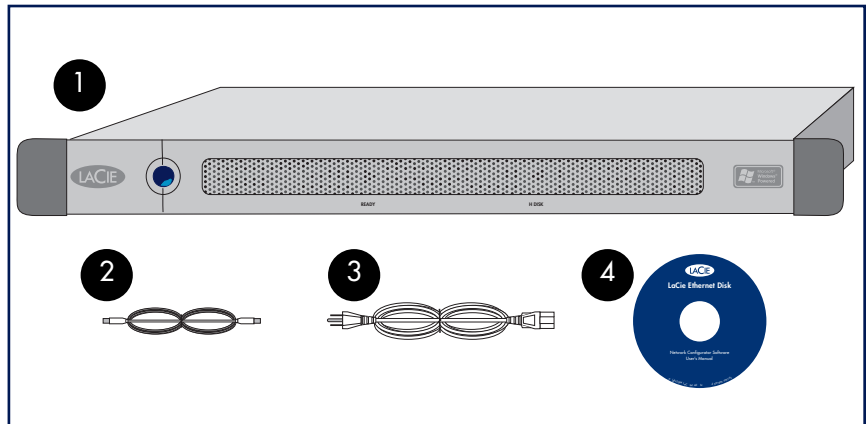
- TCP/IP enabled network
- Microsoft Windows 95, 98, Me, NT, 2000, XP
- Mac OS 9.x, 10.x
- Any computer with a browser
- Any computer with an FTP client

LaCie Network Configurator's Minimum Requirements:

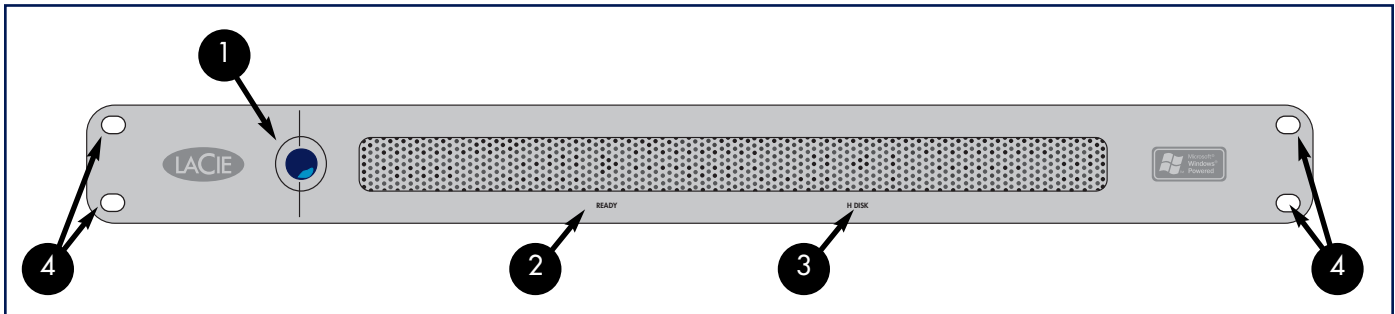
- Microsoft Windows 98, Me, NT, 2000, XP
- Mac OS 9.x, 10.x
- Linux version with a graphic environment and Java 1.1.x or higher
- UNIX version with a graphic environment and Java 1.1.x or higher

2.2. Package Contents

- 1 LaCie Ethernet Disk
- 2 Ethernet cable
- 3 Power cable
- 4 LaCie Ethernet Disk Utilities CD-ROM
- 5 Quick Install Guide (not shown)



2.3. Front Panel



- 1 Power button** – Used to turn the LaCie Ethernet Disk on and off. You can turn on the Ethernet Disk by pressing the Power button (see [4.2. Turning On Your LaCie Ethernet Disk](#)) or using the Wake On LAN feature (see [5.3. Powering Up Your Ethernet Disk Using Wake On LAN \(Windows Only\)](#)).

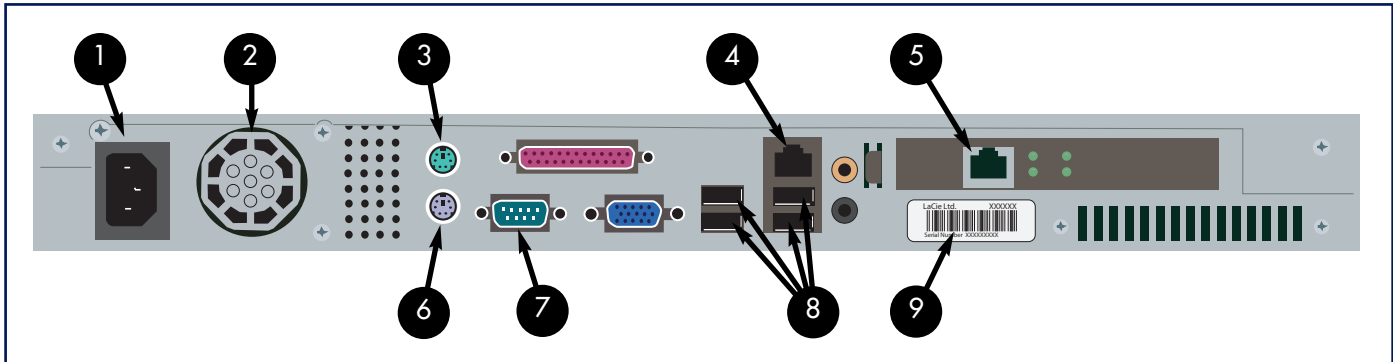


Important Info: *The recommended method to turn off the Ethernet Drive is to use the Web Administration tool; on the Server tab, click the Shutdown button, (see [7.5 Shutting Down The Ethernet Disk](#) for detailed steps.)*

You can also shutdown the Ethernet Disk by pressing the power button on the front of the drive once the LaCie Ethernet Disk will shutdown shortly afterwards. In an emergency you can force the LaCie Ethernet Disk to shutdown by pressing and holding in the power button for five seconds; please note that this method may cause data corruption or data loss.

- 2 Ready Light** – Indicates that the LaCie Ethernet Disk is ready to serve files.
- 3 Disk Light** – Indicates when the LaCie Ethernet Disk is being accessed.
- 4 Rackmount Brackets** – Attaches your LaCie Ethernet Disk in standard, 19" computer equipment racks. See [3.1. Rack Installation](#) for more details.

2.4. Rear Panel



- 1 Power Input** – Where you plug in the AC adapter supplied with the drive. See section [4.1. Connecting The LaCie Ethernet Disk To Your Network](#) for more details.
- 2 Ventilation Fan** – This fan helps to keep your drive cool during operation. Be sure not to block this fan when using your drive.
- 3 Mouse Port** – This port can be used to connect a mouse (not recommended).
- 4 Ethernet Port** – This port is used to connect the Ethernet cable (included with your drive). See section [4.1. Connecting The LaCie Ethernet Disk To Your Network](#) for more details.
- 5 Gigabit Ethernet Port** – only available on Gigabit Ethernet Disk models.
- 6 Keyboard Port** – This port can be used to connect a keyboard (not recommended).
- 7 VGA Video Port** – This VGA video port can be used to connect a monitor (not recommended).
- 8 Hi-Speed USB 2.0 Ports** – These ports can be used to attach additional hard drives. Please see section [10.1. Adding Additional Storage](#) for more information.
- 9 Serial Number Sticker** – This is where you will find your LaCie Ethernet Disk's serial number. Write down the serial number and keep it in a safe place, because you will need to provide the number in the event you have to call LaCie Technical Support for any reason in regard to the drive's performance. The serial number would also come in handy if your drive is lost or stolen.

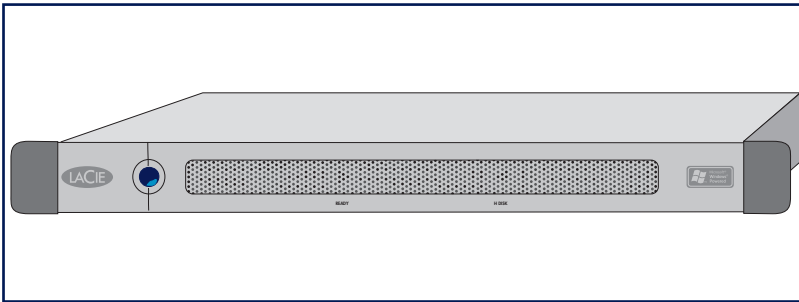
3. Setting Up Your LaCie Ethernet Disk

Your LaCie Ethernet Disk was designed to allow for quick and easy installation.



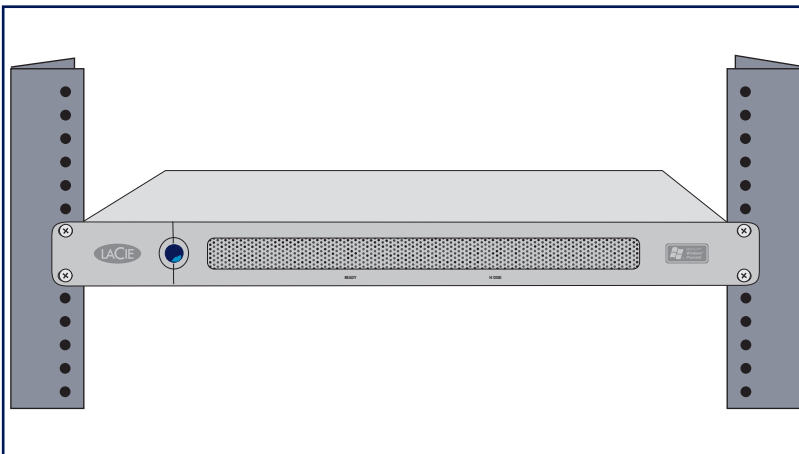
Caution! Once you have mounted the LaCie Ethernet Disk, do not set heavy objects on top of the unit (the LaCie Ethernet Disk can support up to 25 kilos).

3.1. Stand-alone Installation



If you do not want to install the LaCie Ethernet Disk into a rack, you can place it on a tabletop as you would a desktop or workstation.

3.2. Rack Installation



The LaCie Ethernet Disk fits easily into standard 19" computer equipment racks.

1) Carefully slide the LaCie Ethernet Disk into a shelf space in the rack. Use your equipment rack's screws to secure the device in place in the rack.



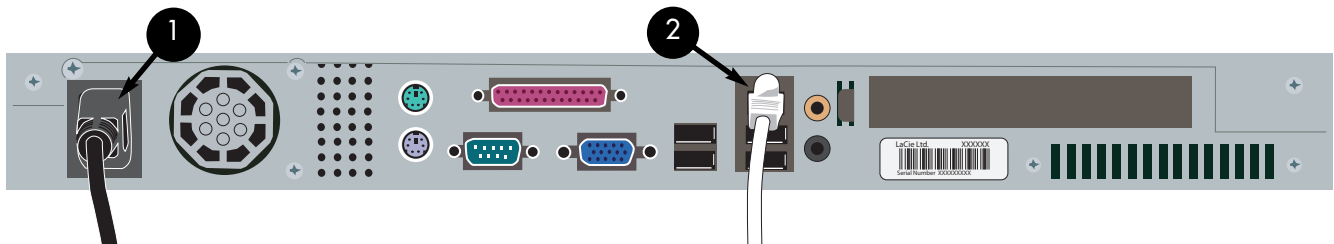
Important Info: Please refer to your equipment rack's documentation for specific details about device weight and installation instructions.

4. Installing Your LaCie Ethernet Disk

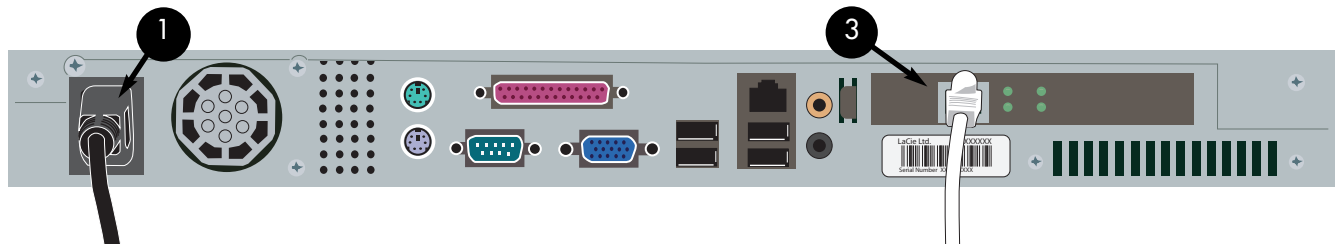
The LaCie Ethernet Disk is compatible with either 10BaseT or 100BaseTX, or Gigabit.

4.1. Connecting The LaCie Ethernet Disk To Your Network

- 1 Connect the included AC power cord to your LaCie Ethernet Disk, and then plug the other end to an AC wall outlet.
- 2 For 10BaseT or 100BaseT ethernet models, connect to the Ethernet port using the Ethernet cable provided.



- 3 OR for Gigabit ethernet models, connect to the Gigabit Ethernet port using the Ethernet cable provided.



Tech Note: If your primary system is not part of a network, or you want to connect the LaCie Ethernet Disk directly to another computer, connect the LaCie Ethernet Disk using a network crossover cable.

4.2. Turning On Your LaCie Ethernet Disk

Press the power button on the front of the drive and wait for the LaCie Ethernet Disk to start up. Once the Ready light is on and stays lit, the LaCie Ethernet Disk will be ready to use.

5. Configuring Your LaCie Ethernet Disk

Before your users can access and use the LaCie Ethernet Disk, you have to make sure the correct IP address and network settings are assigned to the unit.

5.1. Installing the LaCie Network Configurator

To assist you in assigning the correct network settings, LaCie has provided you a Network Configurator program.

5.1.1. Windows Users

Insert the installation CD-ROM into your drive to install the Network Configurator Program.

- 1 Select and install the program
 - a. Double click on the **Network Configurator** icon, after you have inserted the CD.
 - b. When prompted, select a location where you would like to install the Network Configurator program (By default, it saves under C:\Program Files\LaCie NAS Configurator)
 - c. Click **Next**.
 - d. Click **Install** to install the program.
 - e. Click on **Done** to confirm.
- 2 After installation, find the **LaCie Network Configurator** in the location you have installed it and run the program to configure the LaCie Ethernet Disk on the network.

5.1.2. Mac OS 9.x Users

Insert the installation CD-ROM into your drive. Double-click on the Mac OS install icon. The LaCie Network Configurator's installer will start. Click on the LaCie **Network Configurator** icon once it is installed to configure the network.



Important Info: *Your system must have Java installed. Most systems have Java enabled by default. Please refer to your operating system's manual for specific information if it is not installed.*

5.1.3. Mac OS 10.x Users

Insert the installation CD-ROM into your drive. Double-click on the Mac OS X install icon. The LaCie Network Configurator's installer will start automatically. Click on the LaCie Network Configurator icon once it is installed to configure the network.



Important Info: *With older versions of Mac OS 10.x, there may be some difficulties using the Mac OSX installer. Try using the Mac OS installer, instead.*



Important Info: *Your system must have Java installed. Most systems have Java enabled by default. Please refer to your operating system's manual for specific information if it is not installed.*

5.1.4. UNIX Users

First, you will need to log in as the root to run the program. Mount and go to the root directory of your install CD-ROM.

Type: `cd unix`

For Java 2, type: `java -jar lacie.jar`

For Java 1.1x, type: `java -classpath lacie.jar ConfServer`

If this does not work, try typing: `java -classpath [path to]classes.zip:lacie.jar ConfServer`

If this does not work, either, on sh-like shells, try typing:

```
cd [directory where lacie.jar is located]
CLASSPATH=$CLASSPATH:config.jar
export CLASSPATH
java ConfServer
```

Or, for csh-like shells, try typing:

```
cd [directory where nconfig.jar is located]
setenv CLASSPATH $CLASSPATH:nconfig.jar
java ConfServer
```



Important Info: *A graphical environment is required. Your system must also have Java installed. Most systems have Java installed by default. Please refer to your operating system's manual for specific information if it is not installed.*

5.2. Assigning A Network (IP) Address Using The LaCie Network Configurator

A few seconds after the Network Configurator program loads, your LaCie Ethernet Disk which is shown by its Media Access Control (MAC) address will appear in the **Available servers** list box on the left of the application. The current network configuration will appear on the right.

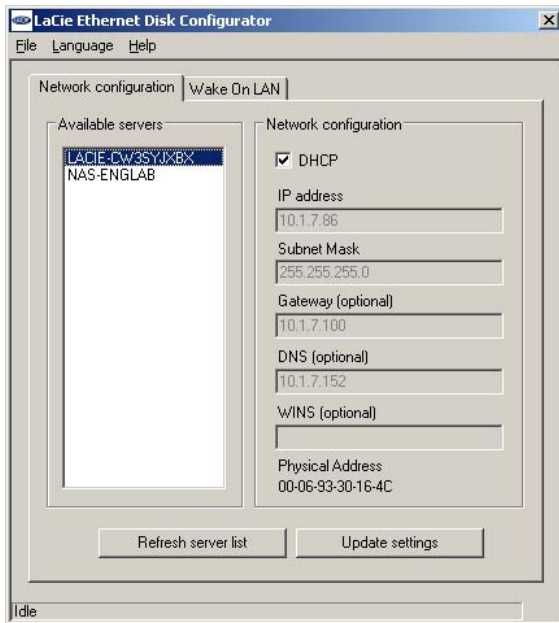


Fig. 5.2.1 Network Configuration for Windows



Fig. 5.2.2 Network Configuration for Mac and Unix

There are two possible scenarios:

If your network is DHCP enabled

You will not need to modify your LaCie Ethernet Disk's network settings. Write down the IP address and quit the Configurator.



Important Info: By default, the LaCie Ethernet Disk is configured to use DHCP.

If your network uses static IP

You will need to manually assign the correct network settings on your LaCie Ethernet Disk. Refer to your network administrator for more information about your network and which parameters you should use.

- 1) Uncheck the DHCP checkbox and fill in the network parameters, then select **Update**.
- 2) Write down the IP address.

3) An administrator log on will be prompted. Type in admin as the password. This is the default administrator password for the LaCie Ethernet Disk.

After processing the information, the LaCie Ethernet Disk will reboot with the new network parameters.

Once you have finished this operation, you should not have to use the LaCie Network Configurator again, unless you have forgotten the IP address or you are moving the LaCie Ethernet Disk.

Once the network parameters have been set, the LaCie Ethernet Disk is ready to be accessed by users. Users will have access to the default folder called "public." Any user can log on as the default user, with the username "myuser" and the password "myuser." To learn more about adding and modifying shares, creating and modifying Users and Groups, please refer to sections [7. Using The Web Administration Page](#) and [8. Advanced Management Of Users, Groups And Shares](#).

6. Accessing Your Ethernet Disk Over The Network

Your LaCie Ethernet Disk appears as a drive with shared folders on the network. You can connect to the LaCie Ethernet Disk as you would with any other server.



Important Info: *If you have just turned on the LaCie Ethernet Disk, it may take a few minutes for the server to show up in the network.*

6.1 Microsoft Windows Users

To access the LaCie Ethernet Disk using Microsoft Windows, look in **My Network Places**. By default, the LaCie Ethernet Disk will be named *LACIE-XXXXXXXX* * under **Workgroup**. When you attempt to access a share, you will be asked to enter a username and a password.



Tech Note: *The default name for the LaCie Ethernet Disk will always be LACIE- followed by 9 random characters (letters and numbers). This manual will refer to this default name as LACIE-XXXXXXXX.*

For faster time connections and usability, LaCie recommends that you map a drive to share. To map a drive to a share, select the **Tools** menu from **Windows Explorer**. Click on **Map a drive**. Fill in the appropriate information and press **Finish**. This will create a new drive mapped to your share (for more information about drive mapping, refer to your Windows manual).

6.1.1. Windows Me, Windows 2000, and Windows XP

For Windows Me, Windows 2000 and Windows XP users, if you cannot find the LaCie Ethernet Disk from your workstation, try using the Windows search tool.

From the **Start** menu, select **Search**, and then click on **For Files or Folders**. In the **Search Results** window, select **Computers**. In the **Search for Computers** dialog box, enter the server name and click the **Search Now** button. The server name is *LACIE-XXXXXXXX* by default.



Tech Note: Windows Me Users – *To access your shares under Windows Me, the administrator will need to create a user with the same username and password as your log in for Windows. This is due to a limitation in Microsoft's operating system.*

6.1.2. Microsoft Windows 95, 98 and NT

For Microsoft Windows 95, 98, and NT users, if you cannot find the LaCie Ethernet Disk from your workstation, try using the Windows search tool.

From the **Start** menu, select **Find** and then **Computer**. Enter the server name and click **Find Now**. Windows will search your system and after a little while, the LaCie Ethernet Disk should appear in the result window. Click on the icon, and you will then be asked to enter a username and password.



Tech Note: Windows 95 and 98 Users – To access your shares under Windows 95 and 98, you will need to create a user on the LaCie Ethernet Disk with the same username and password as your log in for Windows. This is due to a limitation in Microsoft's operating system.

6.2. Mac Users

6.2.1. Mac OS 9.x

From the **Apple** menu, select **Network Browser**, **Chooser** or **Connect to Server**. In **Chooser**, click the **Appleshare** icon. Your server should appear in the list with the default name (LACIE-XXXXXXXXX *). Select it and press **OK**.



Tech Note: The default name for the LaCie Ethernet Disk will always be LACIE- followed by 9 random characters (letters and numbers). This manual will refer to this default name as LACIE-XXXXXXXXX.

6.2.2. Mac OS 10.x

Under Mac OS 10.x, click **Connect to Server** in the **Go** menu, and then enter the IP address of your LaCie Ethernet Disk. A list of shares will appear. Click on the shares that you want open and press **OK**. Enter a valid username and password. The new shares will be placed on your desktop.

6.3. UNIX Users

You can connect your LaCie Ethernet Disk using Samba. Please consult the Samba manual, or ask your administrator, for detailed information on how to connect using Samba.

6.4. Connecting Via HTTP Or FTP

If you have enabled **HTTP** share, you can access your share directly from any computer with a current browser. Just open a browser to http://server_ip_address (the `server_ip_address` stands for the IP address assigned to your LaCie Ethernet Disk by the LaCie Network Configurator).

Once the page has loaded, you can choose how you want to connect to the LaCie Ethernet Disk. Click the **HTTP** button to access in `http` mode, or **FTP** to access in the `ftp` mode.

You can also connect directly to the FTP share by opening a browser at ftp://server_ip_address/sharename.



Tech Note: *If you are operating under Windows or are using Internet Explorer to connect via FTP, you can drag and drop objects to upload files if the share is write enabled.*

6.5. Connecting With An FTP Client

You can use any FTP client to connect to the LaCie Ethernet Disk. Clients like LeechFTP, CuteFTP, etc., will work normally.

You can also use the command line command, "`ftp`":

Type: `ftp server_ip`

Enter your username and password.

Type: `cd /sharename`



Tech Note: *The `ftp` command line exists under most Windows versions, and on most UNIX operating systems.*

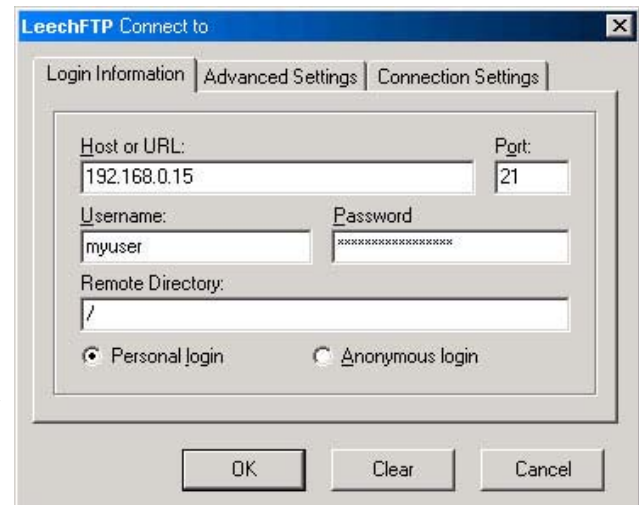


Fig.6.5

7. Using The Web Administration Page

LaCie provides a **Web Administration Page** with utilities that allow the LaCie Ethernet Disk administrator to easily create and customize shares, add and modify users and groups, and assign user permissions.

7.1. Accessing The Web Administration Page

1) To access the Web Administration Page:

Open your browser to http://server_ip (the *server_ip* stands for the IP address assigned to your LaCie Ethernet Disk by the LaCie Network Configurator).

You should see a Web page showing the available shares on your LaCie Ethernet Disk.



Important Info: *It is recommended that you use Internet Explorer 5.0 or higher as your browser.*

2) To enter the Web Administration Page,

- a) Click in the upper left-hand corner designated "Administrator." You will be prompted to enter a user name and a password.
- b) Use *administrator* for the username, and *admin* for the password.

You will then be in the Web Administration Page.

7.2. Wizard And Advanced Modes

There are two different ways to use the Web Administration Page: **Wizard** mode or **Advanced** mode.

Wizard Mode

This method is recommended for beginning administrators, or for those who have a limited technical knowledge base.

The Wizard mode provides an easy way to create new shares and users. This mode will guide you through a series of questions and will help you to create your shares and users.

Click the **Wizard Mode** button to use this utility.



Important Info: Only public shares can be created in Wizard mode.

Advanced Mode

The Advanced mode provides you with all of the available tools: you can create, delete and customize any share and user. You can also change the system configuration (machine name, time, etc.) and defrag or back up drives.

Click the **Advanced Mode** button to utilize these tools.

7.3. Using the Wizard Mode

7.3.1. Creating A Share: "Share Name"

Enter the name of the share you want to add and press the **Next** button. The name must only contain valid characters (do not use any of the following: ? [] \ / = + < > ; : " , | *).



Tech Note: If you will be using your LaCie Ethernet Disk with Mac OS 9.x, the file and folder length is limited to 27 characters. If you will be using your LaCie Ethernet Disk in a network environment with Mac OS 9.x and Mac OS 10.x or Windows, the same limitation applies. In network environments that utilize Windows and/or Mac OS 10.x, files and folders may be up to 255 characters.

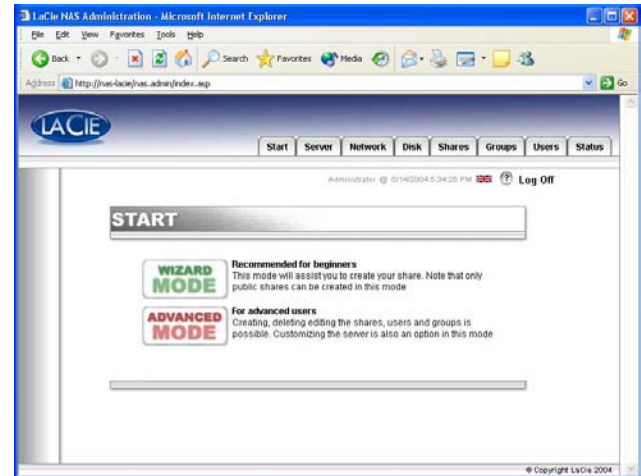


Fig.7.3

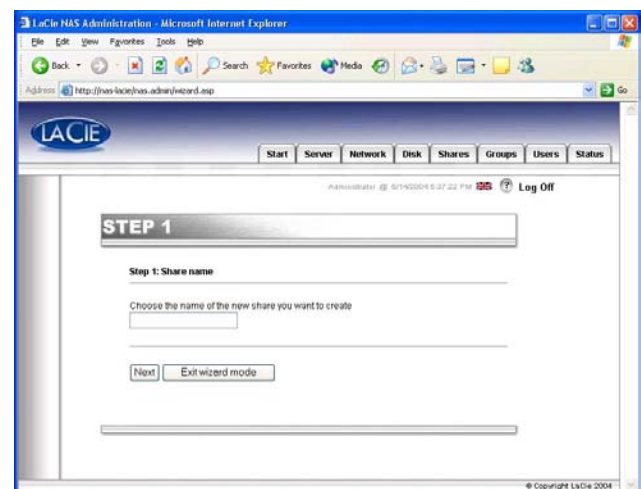


Fig.7.4.1.

7.3.2. Username

The share that you are about to create is public – this means that anyone who has an account on the LaCie Ethernet Disk will be able to access it. To limit access, you have to create users. If you already have user accounts, you may skip this step and click on the **Next** button. If you want to add a user, please fill in the input boxes and then press **Next**.

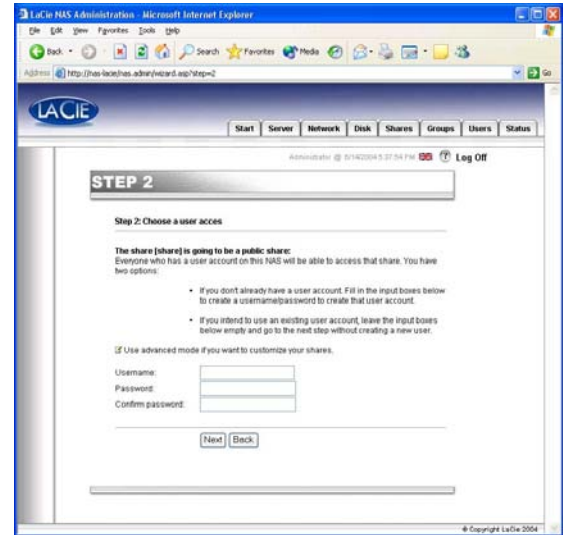


Fig.7.4.2

7.3.3. Confirmation

This step gives you a summary of the actions that are going to be performed by the Wizard. Use the **Back** button to go to the previous screens and to change the settings. Once all settings are how you would like them, press the **Next** button.

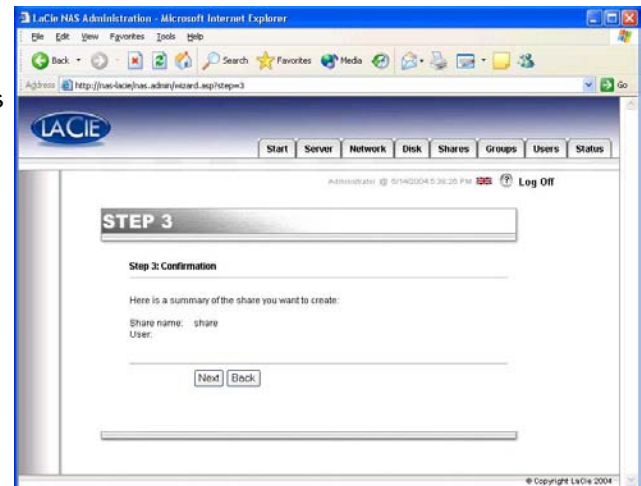


Fig.7.4.3

7.3.4. Set-up Complete

Once the Wizard has successfully completed the above steps, you will see this page. Click **Exit** to go back to the main page.



Important Info: *The share and/or user will not be created until the last step of the Wizard. You need to complete all the steps of the Wizard to create the share/user correctly. During the process, you can use the **Next** and **Back** buttons to make changes to your settings.*

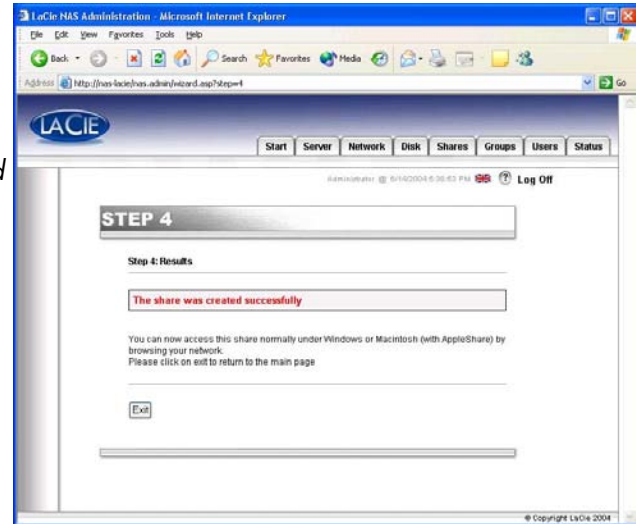


Fig.7.4.4

7.4. Using The Advanced Mode

7.4.1. Changing The Name And Location Of The LaCie Ethernet Disk

7.4.1.1. Changing The Name

The server name is the one that is used to identify your LaCie Ethernet Disk on the network. By default, it is set as **LACIE-XXXXXXXX***.



Tech Note: *The default name for the LaCie Ethernet Disk will always be LACIE- followed by 9 random characters (letters and numbers). This manual will refer to this default name as LACIE-XXXXXXXX.*

To change the name of your LaCie Ethernet Disk, from the Web Administration Page, go to the **Server** section and click on the **Edit** button to the right of the machine name. You can then change the name through this page. Keep in mind you will need to reboot the LaCie Ethernet Disk for your changes to take effect.

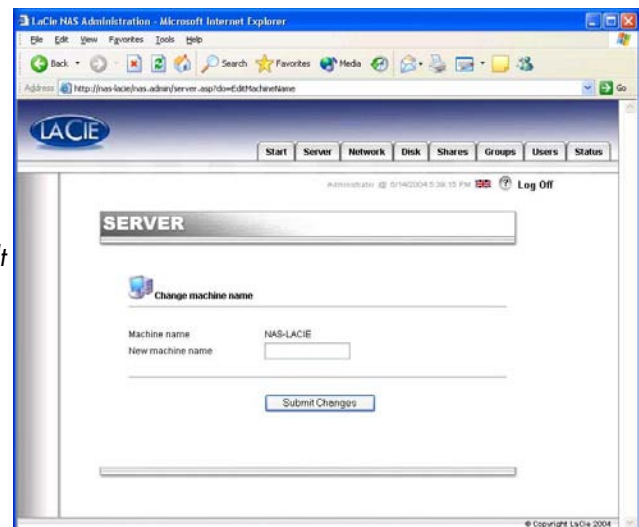


Fig.7.5.1.1.

7.4.1.2. Moving From A Workgroup To A Domain

Windows Users: You can choose whether or not your LaCie Ethernet Disk should belong to a Workgroup or a Domain. By default, your LaCie Ethernet Disk will belong to the workgroup named WORKGROUP. You can also set your LaCie Ethernet Disk into a Windows domain. An administrator domain user name and password will be required, though. Please ask your system administrator for more information.

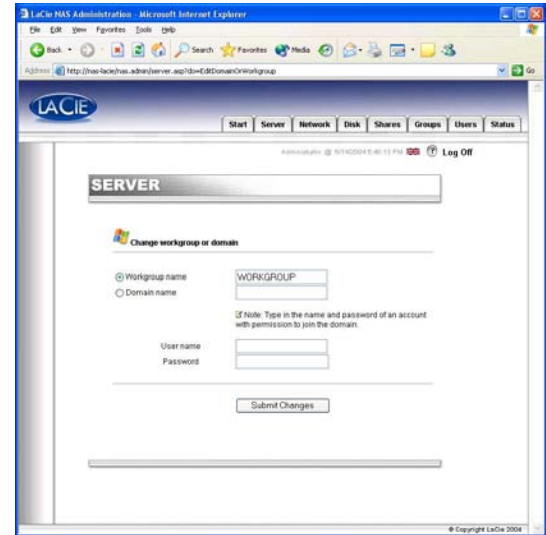


Fig.7.5.1.2

7.4.2. Setting The Date And Time Of Your LaCie Ethernet Disk

You can set the date and time of your LaCie Ethernet Disk in the Web Administration Page, under the **Server** section. Click on the button next to the current time, which brings you to the **Edit system time** page. Set the date and time, and then press the **Set time and date** button.

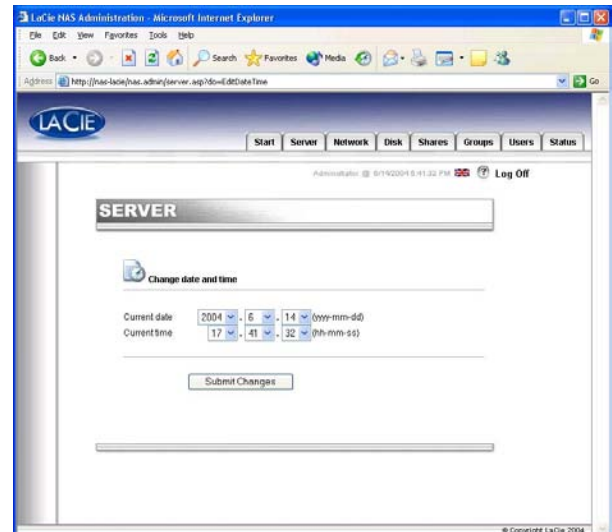


Fig.7.5.3.1

7.4.3. Sharing Your LaCie Ethernet Disk In Advanced Mode

Your LaCie Ethernet Disk works like a typical file sharing system: you create users and/or groups that have access to use and share data, then create a share and assign the users and/or groups rights to that share.

7.4.3.1. Creating Users

Click on the **Users** tab and press the **Add a user** icon. Enter the username* and all the necessary information in the text fields, then press the **Add new user** button.

*Username must be unique and contain at least 4 characters.

Do not use any of the following characters:

? [] \ / = + < > ; : " , | *

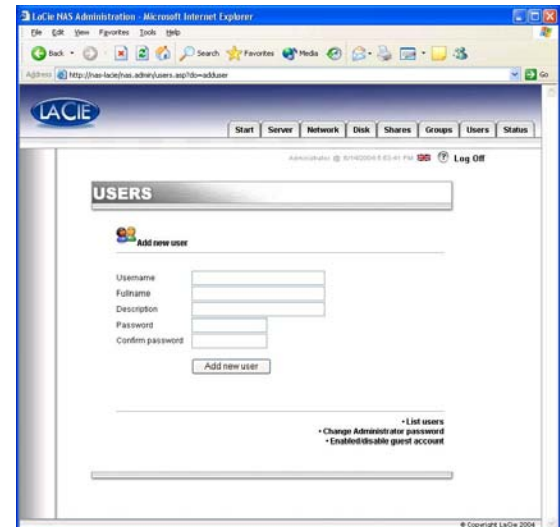


Fig.7.5.3.1

7.4.3.2. Creating Groups

Click on the **Groups** tab and press the **Add a group** icon. Enter a group name* and a description for the group in the text fields and press the **Add group** button.

*The group name must be unique and contain at least 4 characters.

Do not use any of the following characters:

? [] \ / = + < > ; : " , | *

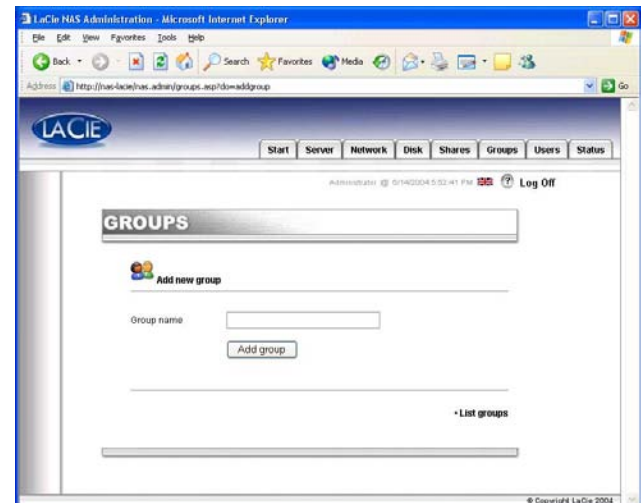


Fig.7.5.3.2

7.4.3.3. Creating Shares

Click on the **Shares** tab and press the **Add a share** icon. Enter a share name* and select a drive or partition for the share, and then press the **Submit Changes** button.

*The share name must be unique and contain at least 4 characters – Do not use any of the following characters: ? [] \ / = + < > ; : " , | *



Tech Note: If you will be using your LaCie Ethernet Disk with Mac OS 9.x, the file and folder length is limited to 27 characters. If you will be using your LaCie Ethernet Disk in a network environment with Mac OS 9.x and Mac OS 10.x or Windows, the same limitation applies. In network environments that utilize Windows and/or Mac OS 10.x, files and folders may be up to 255 characters.

Once the share is created, you must edit it in order to allow people to access it. Click on **List Shares** and all of the shares of that have been created will appear. Click on a share name to edit the share properties.

There are four types of shares:

Windows (CIFS/SMB)

This share is compatible with Microsoft Windows networks. Enable this type of share if you want to share your data under Windows (95, 98, Me, NT, 2000 and XP).

Apple (Appleshare)

This share is compatible with Mac OS systems. Enable this type of share if you want to share your data under Mac OS 9.x and 10.x.

HTTP

This share is compatible with all systems that have a Web browser (Internet Explorer, Netscape Navigator, Opera, Lynx, etc.). This share type is compatible with nearly all modern systems, but is suitable for read-only data operations. Enable this type of share if you want maximum compatibility over your network, and if you can share your data as read-only.

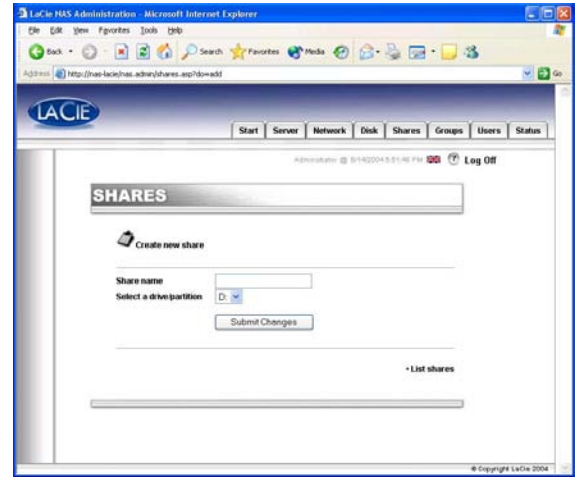


Fig.7.5.3.3a

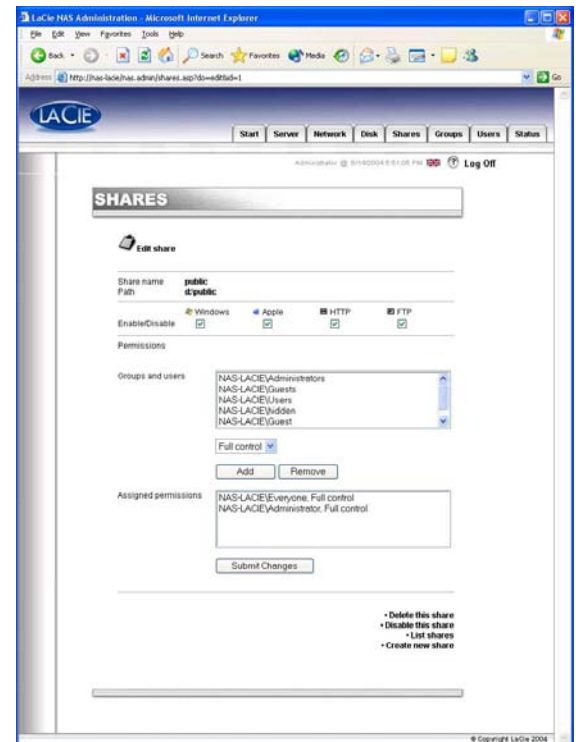


Fig.7.5.3.3b

FTP

This share is compatible with all systems that have an FTP client. Most systems include such a tool. Enable this type of share for maximum compatibility over the network.

In the current version of the LaCie Ethernet Disk (version 1.2 and later), you can set share permissions under Windows and the Mac OS. Use the arrow buttons to add or remove permissions. Under Apple, if enabled, the share will be accessible for any authenticated user. Under HTTP and FTP, the share will be public in either or both read and write access, whether or not you checked the read and/or write checkboxes.

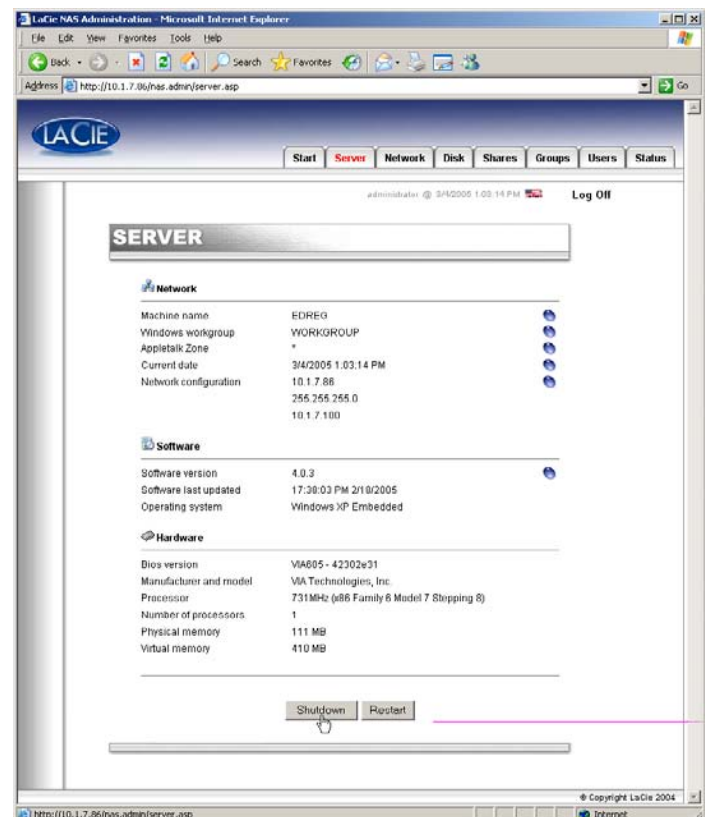


Important Info: When you create a share, the Windows (CIFS/SMB) sharing is activated by default.

7.5. Shutting Down The Ethernet Disk

The recommended method to turn off the Ethernet Drive is to use the Web Administration tool. Two other methods using the Power button are described in section [2.4. Back Panel](#).

- 1) Click on the Server tab.
- 2) Click on the Shutdown button (located near the bottom of the page).



8. Advanced Management Of Users, Groups And Shares

8.1. Listing Local Users

A user is any individual with a valid username and password who, once authenticated, has access to those shares on the LaCie Ethernet Disk to which (s)he is allowed.

In the Web Administration Page, click on **Users** to have access to the list of the local users on your LaCie Ethernet Disk.

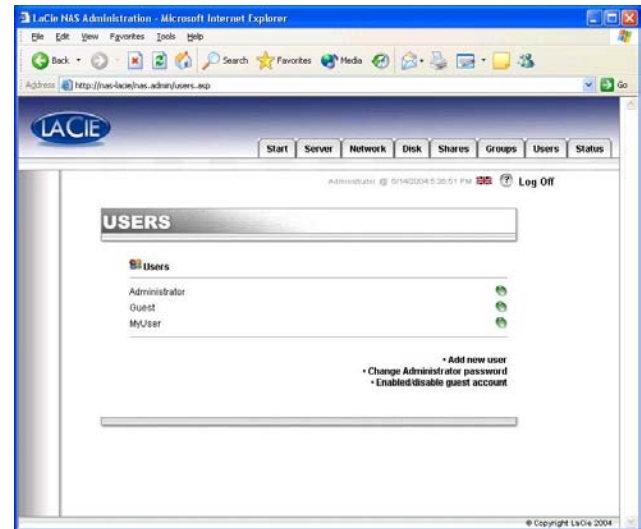


Fig. 8.1

8.1.1. Creating A User

In the Web Administration Page, click on the **Users** tab. From the lower-right corner of the page, click on **Add a user** to create a new user (please refer to [7.4.3.1. Creating Users](#) for more information):

- 1) Enter the new username. It must be unique to the local machine.
- 2) Enter a description.
- 3) Enter a password and confirm it.
- 4) Press the **Create the user** button.
- 5) Your new user has been created, and by default, it will belong to the **Users** group.

8.1.2. Editing A User

- 1) From the list of local users, click on the button next to the username that you wish to edit.
- 2) Edit the username, password and description as you like.
- 3) Assign groups to the user.
- 4) Submit the changes.



Important Info: By default, a user belongs to the Users group. If you want a user to become an administrator, add that user to the Administrators group.

8.1.3. Deleting A User

Edit the user, then, from the bottom of the page, click on the **Delete** button.

8.2. Listing Local Groups

A group is a collection of users with the same access rights. Putting users in the same group allows you to collectively manage them, thus more quickly and easily.

In the Web Administration Page, click on the **Groups** tab to have access to the list of local groups on your LaCie Ethernet Disk.

8.2.1. Creating A Group

In the Web Administration Page, click on the **Groups** tab. From the lower-right corner of the page, click on **Add a group** to create a group (please refer to [7.4.3.2. Creating Groups](#) for more information).

1) Enter the new group name. It must be unique to the local machine.

2) Leave the domain group blank, or fill it in if you want to create a domain group (you will need to have access rights to the domain if you create it as such. Ask your system administrator for more information). For default settings, leave it blank.

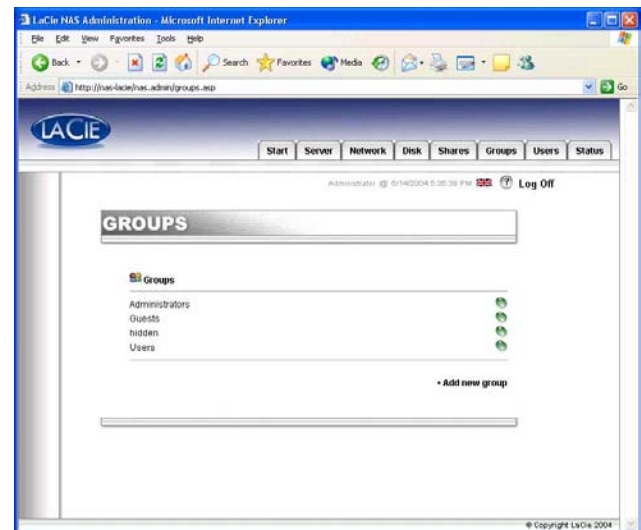


Fig.8.2

- 3) Enter a description.
- 4) Press the **Create the group** button.
- 5) Your group is now created, and by default, it belongs to the Users group.



Important Info: *There are a few fixed groups on the LaCie Ethernet Disk, and they can not be deleted. They are: Administrators, Guests, Power Users and Users.*

8.2.2. Editing A Group

- 1) From the list of local groups, click on the button next to the group name that you wish to edit.
- 2) Change the description as desired.
- 3) Submit the changes.

8.2.3 Deleting A Group

Edit the group, then, from the bottom of the page, click the **Delete** button.



Important Info: *There are a few fixed groups on the LaCie Ethernet Disk, and they can not be deleted. They are: Administrators, Guests, Power Users and Users.*

8.3. Listing Local Shares

A share is a folder on which designated groups and/or users can be granted access to create, modify, read, and delete files.

From the Web Administration Page, click on the **Shares** tab to list the local shares on your LaCie Ethernet Disk.

8.3.1. Creating A Share

From the Web Administration Page, click on the **Shares** tab. From the lower-right corner of the page, click on **Add a share** to create a share (please refer to [7.4.3.3. Creating Shares](#) for more information).



Tech Note: When you have multiple drives in your LaCie Ethernet Disk, or when you connect a mass storage device to your LaCie Ethernet Disk, you will be able to choose the drive in which you want to create the share. The drives will be named as they typically are under Windows, i.e. D: (first data drive), E: (second data drive), etc..

8.3.2. Editing A Share

From the list of local groups, click on the button next to the share name to edit that share. Refer to [7.4.3.3. Creating Shares](#) for more information.

8.3.3. Deleting A Share

Edit the share, then, from the bottom of the page, click the **Delete** button.

8.3.4. Deleting A Broken Share

When you create shares on a removable drive and disconnect that drive, you create what are called “broken shares.” These shares will still be in the share database, but will not be physically present. If you connect your removable drive again, they will not work.

The LaCie Ethernet Disk program allows you to remove the broken shares from the database. At the bottom of the **Shares** page, there will be a list of broken shares, if you have any. Click on the **Delete** button for the share(s) you want to remove.

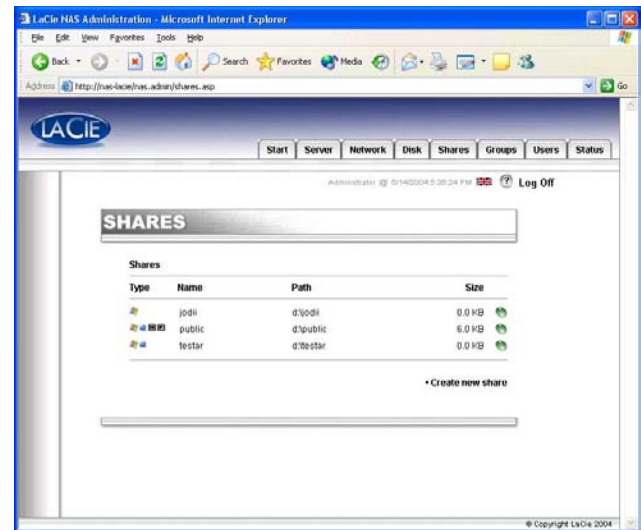


Fig.8.3

9. Customizing Your LaCie Ethernet Disk

9.1. Checking Your Server Configuration

From the Web Administration Page, click on the **Server** tab to find out the configuration of your LaCie Ethernet Disk.

You should see:

- Machine name
- Windows domain or workgroup
- Appletalk zone
- NAS software configuration
- Operating system
- BIOS version
- Manufacturer and model
- Processor
- Number of processors
- Physical memory
- Virtual memory

From this page, you can also reboot and shutdown the server.

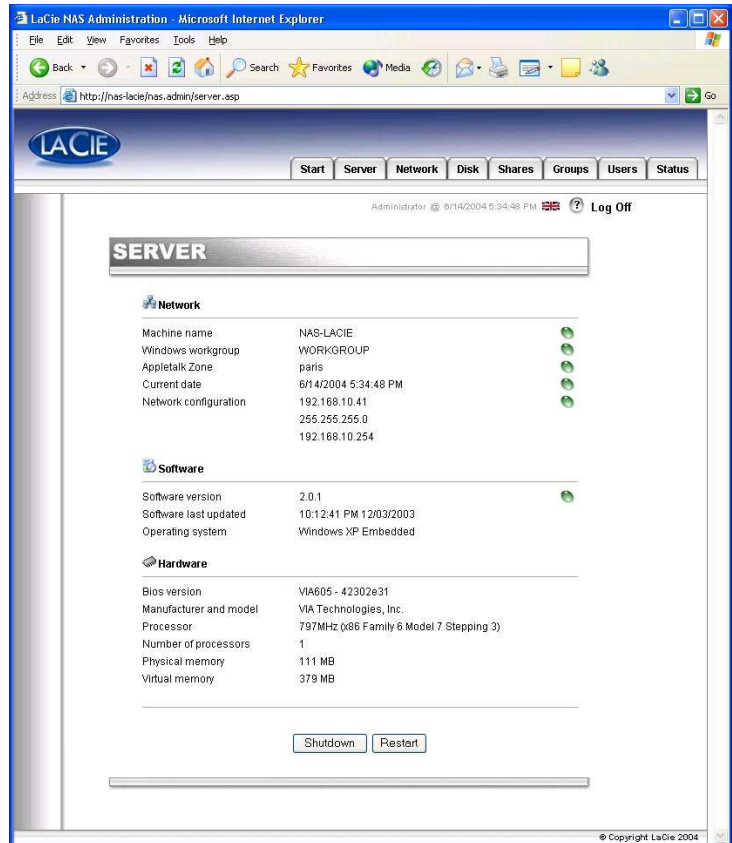


Fig.9.1

9.2. Changing The Administrator's Password

By default, the administrator's password is *admin*. You should change this password as soon as possible, for security reasons.

- 1) In the Web Administration Page, click on the **Users** tab.
- 2) Click on **Change Administrator Password** button.
- 3) Enter your new password and confirm it.
- 4) Press **Submit changes**.

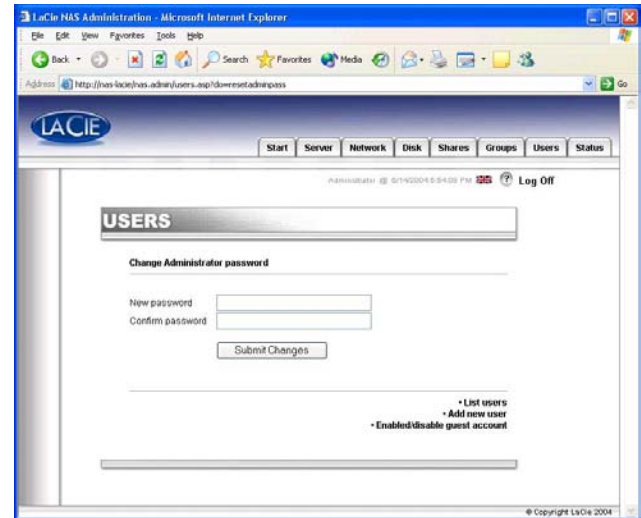


Fig.9.2

9.3. Enabling/Disabling Guest Accounts

Enabling guest accounts allows people to connect to shares without authenticating. However, there are some limitations. For instance, under Windows, you will not be allowed to connect to protected shares unless you map the share as a drive, and there are also security issues. Some problems may also occur under the Mac OS, as well. Therefore, it is recommended that you not enable guest accounts unless you have a high-level of technical expertise and know exactly what you are doing.

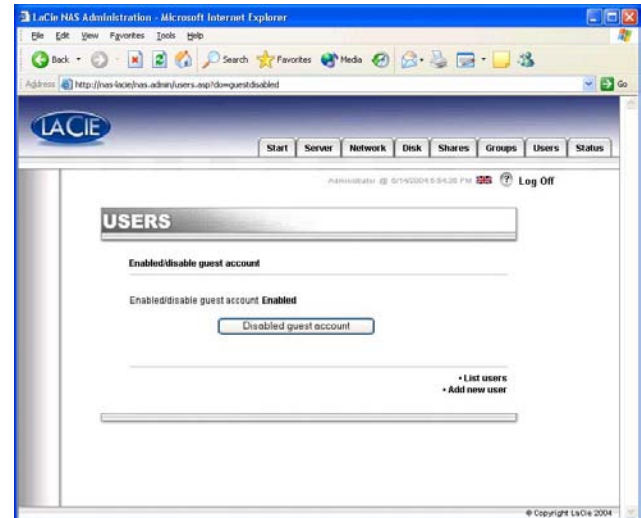


Fig.9.3

9.4. Rebooting Your Server

- 1) In the Web Administration Page, click on the **Server** tab.
- 2) At the bottom of the page, click on the **Reboot** button.
- 3) The server will start to reboot. It will take a little time before it reboots.

9.5. Shutting Down Your Server

- 1) In the Web Administration Page, click on the **Server** tab.
- 2) At the bottom of the page, click on the **Shut Down** button.
- 3) The server will shut down shortly after.

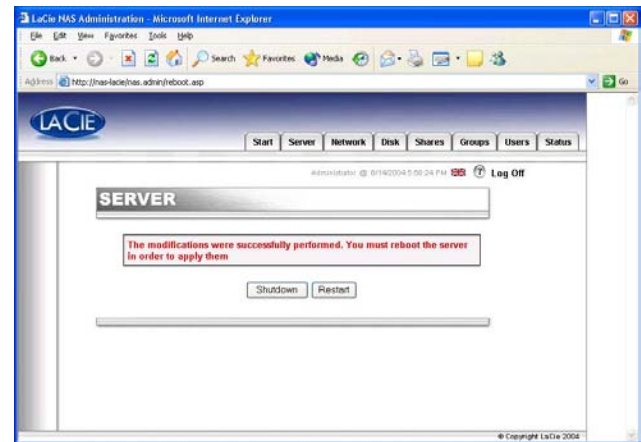


Fig.9.4

9.6. Changing Your Network Configuration

You can change the network configuration from the Web Administration Page. It is similar to the Network Configurator program (on the provided CD).

- 1) In the Web Administration Page, click on the **Network** tab.
- 2) Enter the parameters for the network, and submit the changes. For your LaCie Ethernet Disk, only the IP address and subnet mask need to be double-checked prior to making changes. Other values are optional. Ask your system administrator for more details.
- 3) The **Reboot your machine** page will appear.
- 4) Reboot the machine.

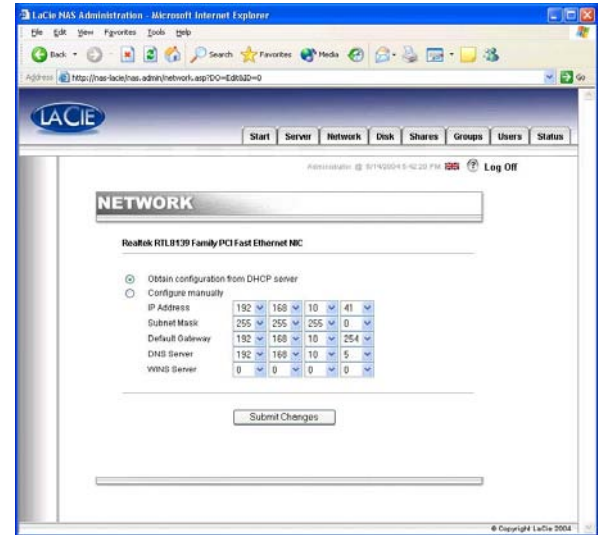


Fig.9.6



Caution! If you change the subnet mask, LaCie recommends that you use the Network Configurator Program (from the provided CD). If you change the subnet mask from the Web Administration Page, you will not get the **Reboot your machine** page, because your LaCie Ethernet Disk will have changed to another subnet and it will appear as though you cannot access the LaCie Ethernet Disk. You will then need to use a machine on the same subnet to access the Web Administration Page of your LaCie Ethernet Disk.

9.7. Formatting Your Disks

The LaCie Ethernet Disk allows you to format a disk. To format a disk, use the formatting tool:

- 1) In the Web Administration Page, click on the **Disk** tab.
- 2) Check **format** for the drive* that you want to format.
*There should only be one drive, unless you have attached an external hard disk drive to your LaCie Ethernet Disk.
- 3) Answer the following questions, then click on the **Format** button. Leave the status window open until the formatting process completes.

The formatting process can be a quick process, or a long process, depending on the size of your hard drive. If necessary, you can stop the formatting process at any time – it is not recommended, though, because you may corrupt files or cause other errors.



Important Info: Before beginning the formatting process, all files must be unlocked (i.e., the files cannot be in use). It is recommended that you format the drive immediately after a reboot to ensure that no one is accessing shares during the formatting process.

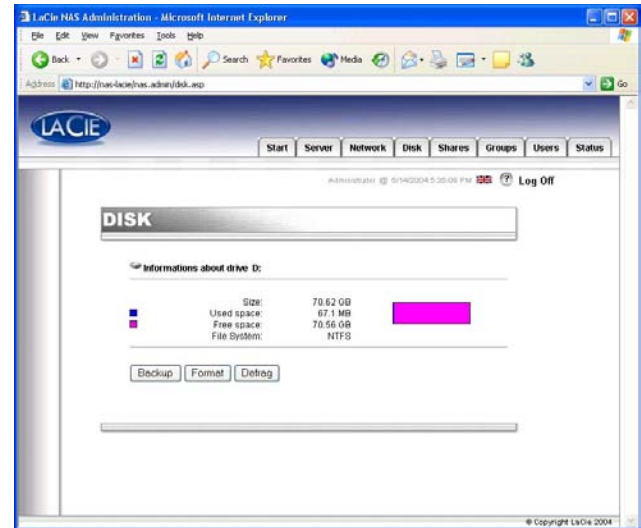


Fig.9.7a

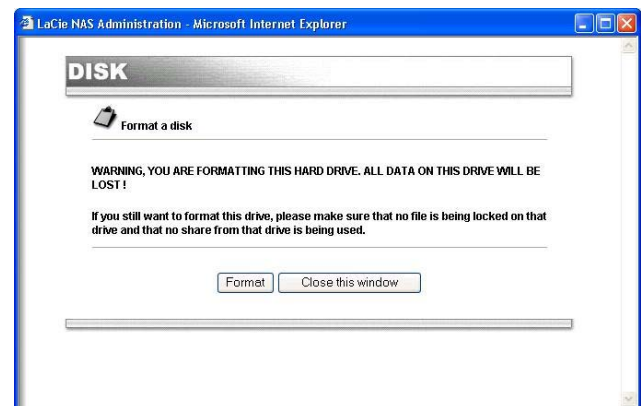


Fig.9.7b

9.8. Defragmenting Your Disks

When a disk is too fragmented it causes the disk to slow down. You can defragment a disk using the defragment tool provided with your LaCie Ethernet Disk.

- 1) In the Web Administration Page, click on the **Disk** tab.
- 2) Check defragment for the drive* that you want to defragment.
*There should only be one drive, unless you have attached an external hard disk drive to your LaCie Ethernet Disk.
- 3) Answer the following questions, then click on the **Defragment** button. Leave the status window open until the defragmentation process is completed.

The defragmentation process can be a quick process, or a long process, depending on the size of your hard drive. If necessary, you can stop the defragmentation process at any time – it is not recommended, though, because you may corrupt files or cause other errors.

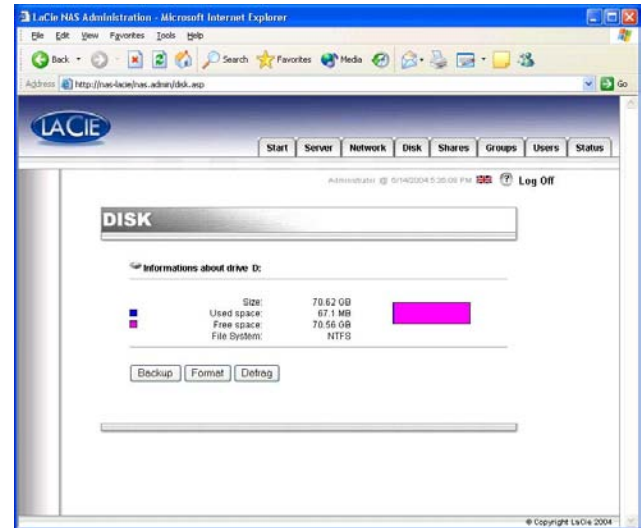


Fig.9.8a

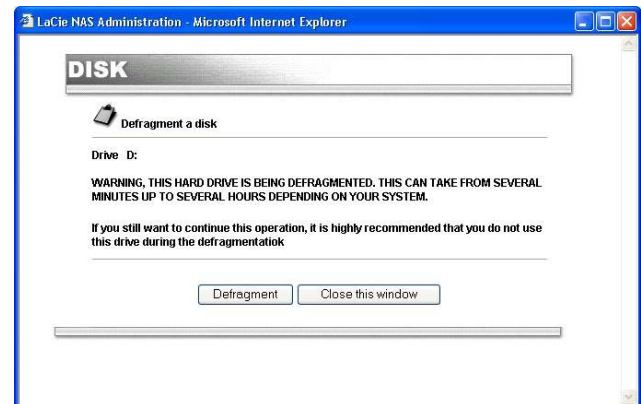


Fig.9.8b

9.9. Backing Up Your Disks Using The Included Backup Program

The LaCie Ethernet Disk uses Microsoft's NT Backup to perform a backup of one, many, or all directories of your drive, and can be scheduled to run every day, week or month at a predetermined time. The Backup utility helps you protect data from accidental loss if your system experiences hardware or hard disk failure. For example, you can use the Backup utility to create a duplicate copy of the data on your hard disk. If the original data on your hard disk is accidentally erased or overwritten, or becomes inaccessible because of a hard disk malfunction, you can easily restore the data from the archived copy.

9.9.1. Backing Up With The Included Backup Program



Important Info: *This backup program is only available if your LaCie Ethernet Disk has a direct-attached hard drive. You can only back up from one drive to another; you cannot back up to a Tape Drive using this program.*

The backup file will be saved under the destination drive (\nas.backup\backup.bkf) file.

- 1) In the Web Administration Page, click on the **Disk** tab.
- 2) Check **Backup** for the drive that you want to backup.
- 3) Choose the drive that you want to backup to in section **1. Source and destination**.
- 4) Choose the directories that you want to backup in section **2. Directories to backup**. Hold down the CTRL key if you want to choose specific, multiple directories, or choose to backup all the directories.
- 5) Choose from the pull-down menu the type of backup to execute in section **3. Select the type of backup**. The options are Normal, Incremental and Differential.
- 6) Choose a schedule for your backup. You can choose between a daily, weekly or monthly backup at a specified time. You can also choose to backup right now.

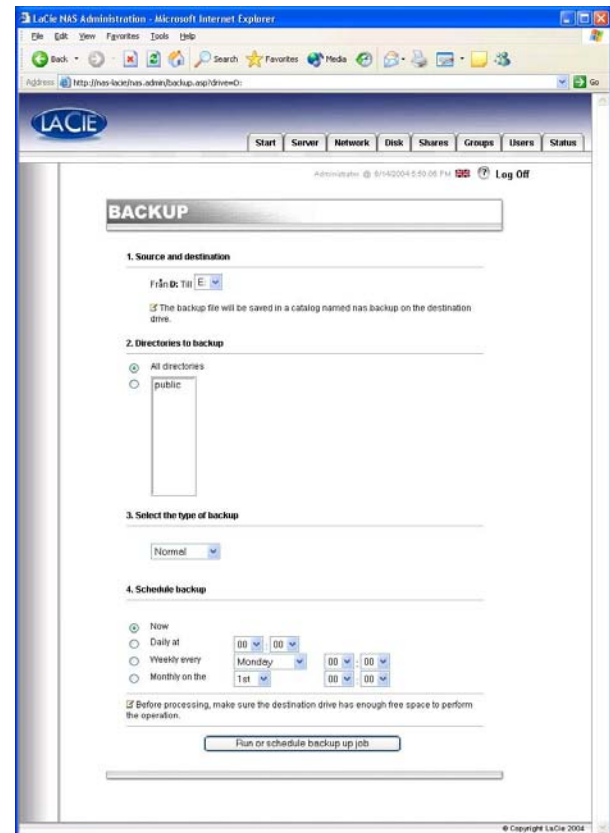


Fig.9.9.1

7) Press the **Run or schedule backup job** button to start the backup process.



Tech Note: Backup time is dependent upon the speed of the drive that you are using, the port that you are using (internal drives are limited to 133Mb/s, Hi-Speed USB 2.0 is limited to 480Mb/s) and the amount of the data that you are backing up.

You can stop the backup process while it is running by clicking the **Stop the running backup** button.

To view the scheduled backup jobs, click on the **Server** tab. To remove a scheduled backup, press the **Delete** button for the scheduled job.

9.9.2. Recovering Files Using The Included Backup Program



Tech Note: You can use Backup to back up and restore data on either file allocation table (FAT) or NTFS file system volumes. However, if you have backed up data from an NTFS volume, it is recommended that you restore the data to an NTFS volume. If you do not, you could lose data as well as some file and folder features such as permissions.

1) Connect locally to the Ethernet Disk using keyboard, mice and monitor. You can also connect using the Remote Desktop Connection Client.

2) Double-click on the **NT Backup** icon on the desktop.

3) Click the **Next** button.



Fig.9.9.2a

4) Select **Restore files and settings** and click the **Next** button.



Fig.9.9.2b

5) Select the file(s) or folder(s) you want to restore.

6) Click the **Next** button.

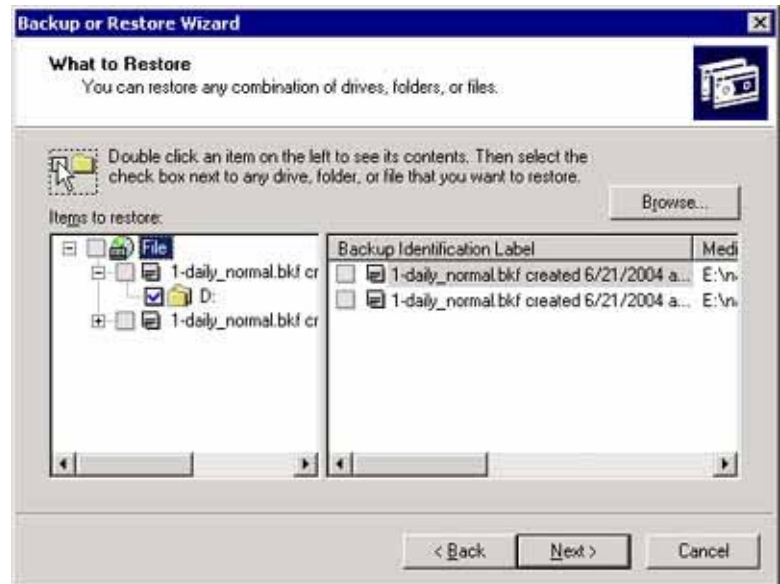


Fig.9.9.2c

7) Click the **Finish** button.


 **Tech Note:** Clicking on the *Advanced...* button will allow you to specify additional restore options. (i.e. Alternate location or Single folder).



Fig.9.9.2d

8) The restore progress dialog will appear.

When then restore is complete click the **Close** button.



Fig.9.9.2e

9.10. Backing Up Your Disks Using Third-Party Software Programs

The LaCie Ethernet Disk is compatible with third party backup programs, such as Retrospect, ArcServeIT, NT Backup, etc., and you can utilize these programs to backup your LaCie Ethernet Disk over the network to a Tape Drive.

Since your LaCie Ethernet Disk can be seen on the local area network (LAN), and because you can map the shares, you can backup all the data on your LaCie Ethernet Disk over the network, using the program of your choice.

9.11. Uploading A New Version Of The System Software



Caution! *Insure that you are only uploading a newer, valid version of system software.*

- 1) From LaCie's Web site (www.lacie.com), download the latest version of the system software.
- 2) In the Web Administration Page, click on the **Server** tab. At the NAS Software version line, click on the button to the right of the version number.
- 3) This will bring you to the **Update the system** page.
- 4) Browse for the file that you just downloaded from LaCie's site.
- 5) Press the **Upload file** button.
- 6) Reboot your machine.

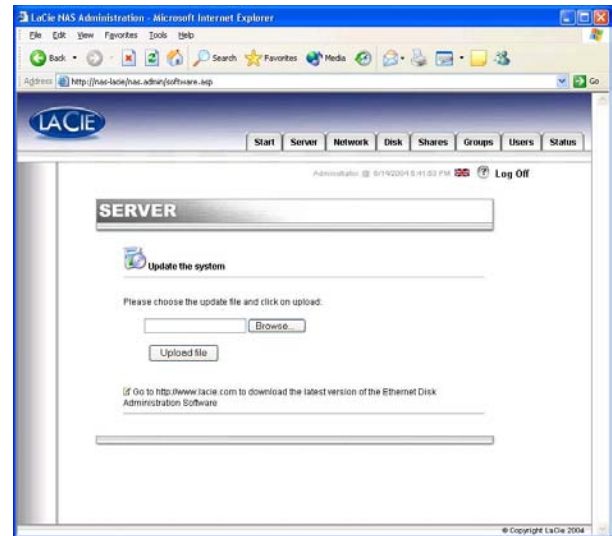


Fig.9.11

Once the server has rebooted, go to the **Server** page again, and check the version of the NAS software. It should now be updated to the latest version.

9.12. Restoring Your LaCie Ethernet Disk



Caution! *This is an emergency procedure only! Do not attempt to restore your LaCie Ethernet Disk if your system is functioning properly.*

- 1) If you want to restore your system to its initial version, open a browser to http://server_ip/nas.restore (the server_ip_address stands for the IP address assigned to your LaCie Ethernet Disk by the LaCie Network Configurator)
- 2) Login with the Administrator account and click the **Restore** button for the restore point that you would like use to rollback your system. Your LaCie Ethernet Disk's system will be restored.
- 3) Shutdown your system by pressing the power button once. The system will be restored during the shutdown process.

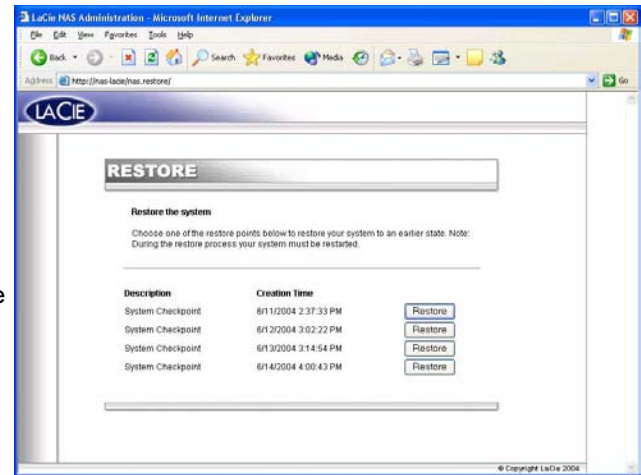


Fig.9.12

10. Expanding Your LaCie Ethernet Disk

10.1. Adding Additional Storage Space

You can add additional storage space to your LaCie Ethernet Disk by connecting an external hard drive using a Hi-Speed USB 2.0 port. Tested, certified drives include LaCie d2 hard drives, LaCie Studio Drives and LaCie Pocket Drives.

- 1) Connect the hard drive to the LaCie Ethernet Disk using one of the Hi-Speed USB 2.0 ports.
- 2) In the Web Administration Page, click on the **Disk** tab.
- 3) Refresh the page if necessary (under Windows in either Internet Explorer or Netscape Navigator, right-click in the frame and click on Refresh or Reload).
- 4) A second drive should then be listed, and you can now create shares on these drives.



Important Info: Only NTFS formatted disks are fully supported. Disks formatted in FAT32 can only be used for backup. Any other format is not supported.

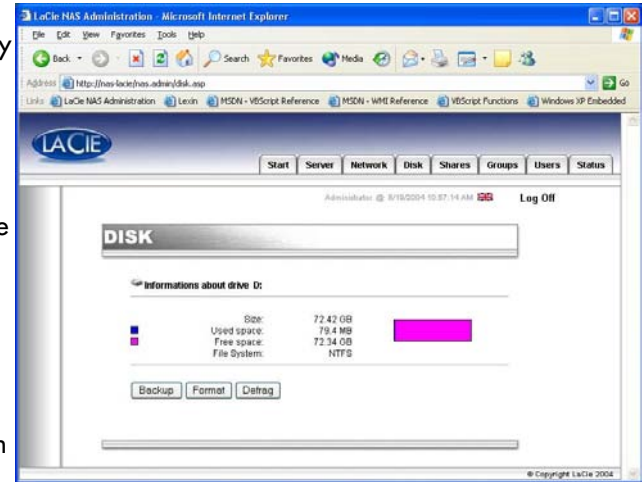


Fig.10.1a

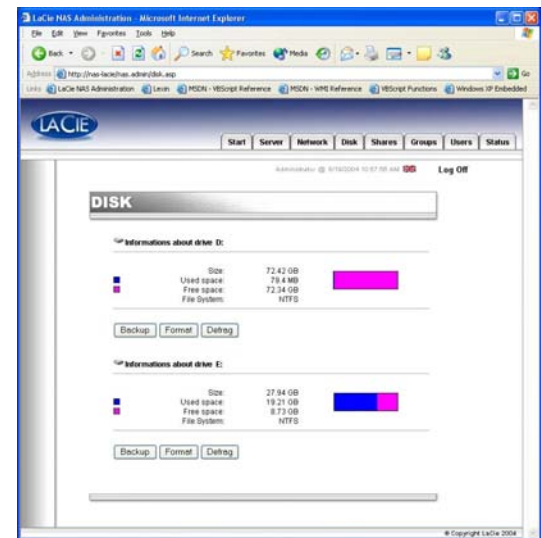


Fig.10.1b

11. Using the LaCie Shell

The LaCie Shell provides you with a simplified interface to the major functions of the Ethernet Disk.

Remote Desktop (for Windows and Macintosh) allows you to access the LaCie Shell from your computer without having to connect a monitor, keyboard, or mouse directly to the Ethernet Disk. Remote Desktop is based on Microsoft's Terminal Services technology and uses the Remote Desktop Protocol (RDP) to allow a client to connect to a remote host. Under RDP, which works across a TCP/IP connection, the client system is allowed to send keyboard and mouse input to the remote host to run applications located on the host system. The host system then uses RDP to send screen and audio information back to the client system. The LaCie Ethernet Disk system does not have any sound card drivers installed and does not support the audio feature.

Connection to the LaCie Ethernet Disk using Remote Desktop should only be used for: setting up your firewall or troubleshooting.

Supported Operating Systems

Mac OS X version 10.2.8 or later
Windows 9x/Me/NT4/W2K/XP

Windows XP comes with the Remote Desktop software pre-installed. For earlier version of Windows you can find the software for download at Microsoft's website: <http://www.microsoft.com/windowsxp/downloads/tools/rdclientdl.mspx>

The Macintosh version of the software is available from Microsoft's Mactopia website: <http://www.microsoft.com/mac>

11.1. Accessing the LaCie Shell using Remote Desktop (Windows)

First make sure you have the Remote Desktop client installed on your system. If you have a Windows version earlier than Windows XP you will need to download it from Microsoft's website and then install it.

1) Click on **Start**, point to **Programs**, point to **Accessories**, point to **Communications** and then click **Remote Desktop Connection**.

2) In the Remote Desktop Connection dialog **Computer** field enter the IP address of the LaCie Ethernet Disk, and click **Connect**.



3) In the LaCie Log On dialog Type in the Administrator username and password, and click **OK**.



The LaCie Shell then appears.



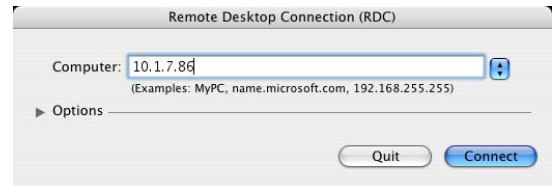
11.2. Accessing the LaCie Shell using Remote Desktop for Mac OS X

First, download and install the Remote Desktop client from Microsoft's website: <http://www.microsoft.com/mac>

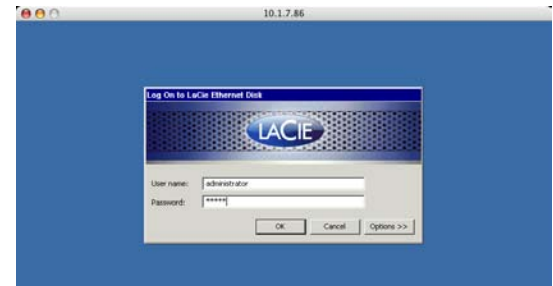
1) Locate the installation folder and double-click on the Remote Desktop Connection icon.



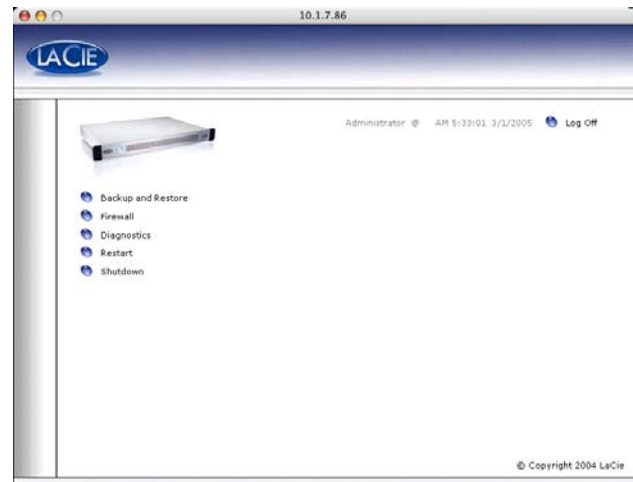
2) In the Remote Desktop Connection dialog **Computer** field enter the IP address of the LaCie Ethernet Disk, and click Connect.



3) In the LaCie Log On dialog Type in the Administrator username and password, and click **OK**.



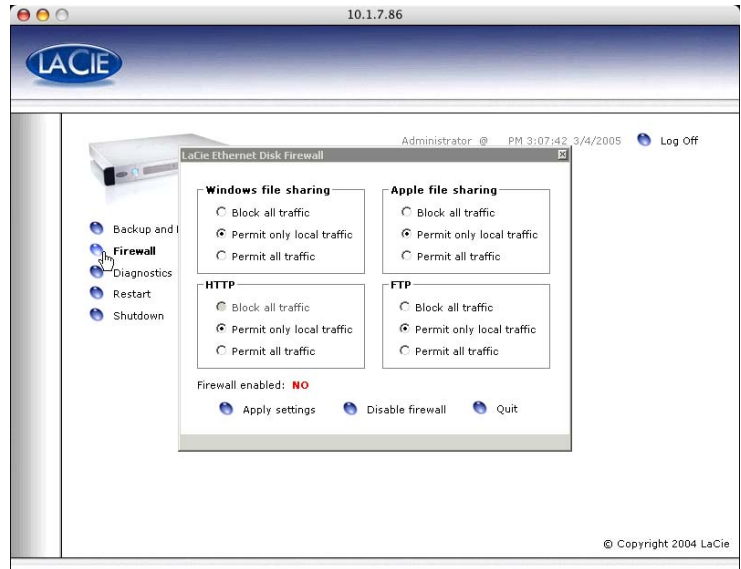
The LaCie Shell then appears.



11.3. Firewall

To configure the firewall of the Ethernet Disk

- 1) Click on the **Firewall** button.
- 2) In the LaCie Ethernet Disk Firewall dialog that appears select the desired settings in each section of the dialog.
- 3) Click **Apply Settings**, then
- 4) click **Quit**.



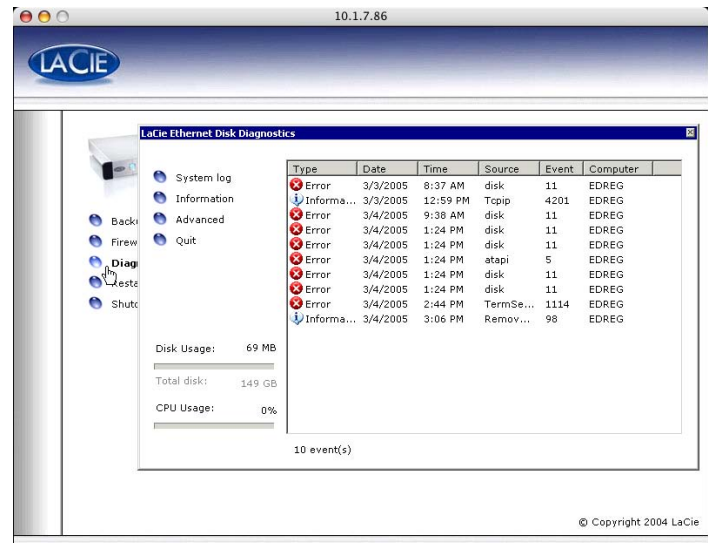
11.4. Diagnostics

When you click on the **Diagnostics** button it displays the System Log.

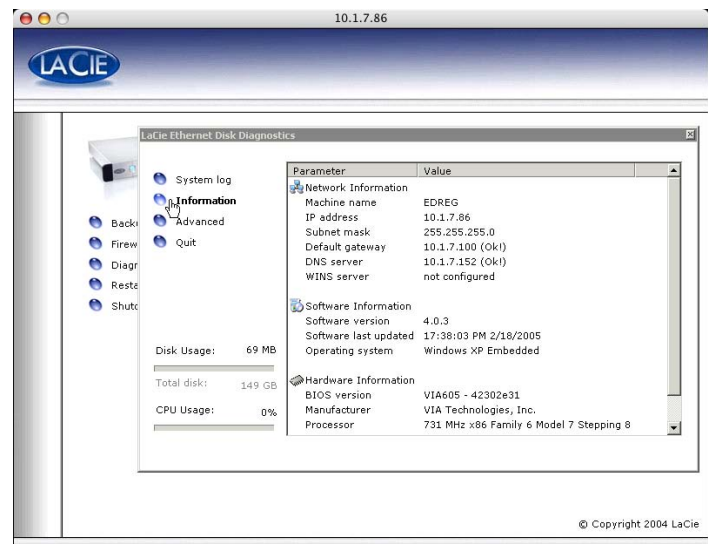
11.4.1 Click on the **System Log** button to display system messages and errors. If you are unfamiliar with Windows error messages, or have any questions about errors you see here, contact LaCie Technical support.

There are three types of messages: errors, warnings, and information. For each event the date, time, source, and an ID are given.

The System Log is also available from the **Status** tab in the web Administration application.

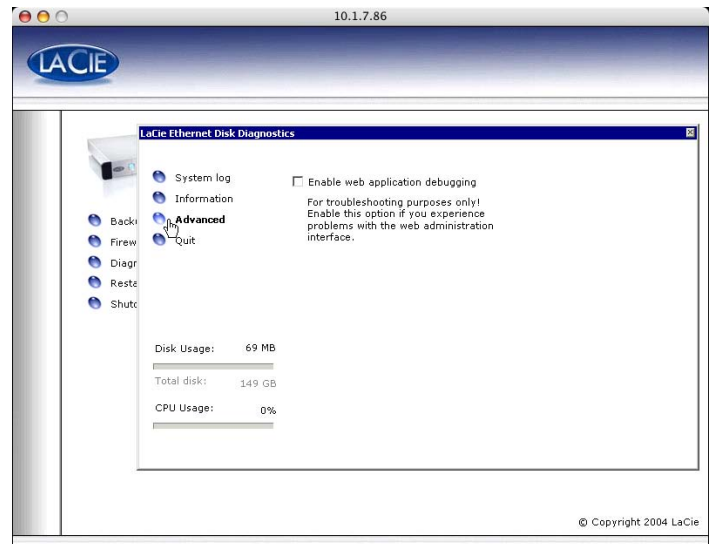


11.4.2. Click on the **Information** button to display the current settings of the Ethernet Disk.



11.4. Diagnostics continued

11.4.3. Click on the **Advanced** button to access the web application debugging option. This option is for troubleshooting purposes only! LaCie Technical Support may ask you to enable this option to help debug problems with the web administration application.



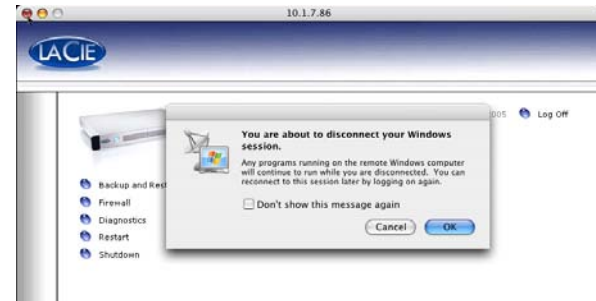
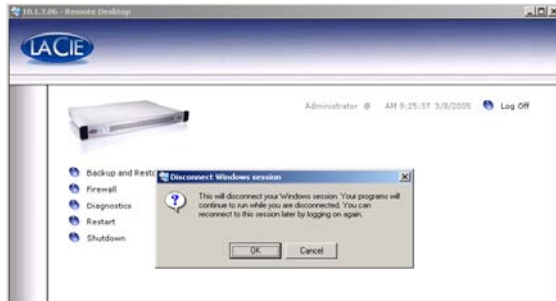
11.4.4 Clicking on the **Backup and Restore** button displays the standard Windows Backup and Restore Wizard. LaCie recommends that you use the Web Administration Backup options described in sections [9.9. Backing Up Your Disks Using The Included Backup Program](#) and [9.10. Backing Up Your Disks Using Third-party Software Programs](#).

Please contact LaCie Technical Support before attempting any restore of the Ethernet Disk, they will advise you whether to use this Wizard, or the one of the methods described in section [9.12. Restoring Your LaCie Ethernet Disk](#) or section [14. Restoring Your Ethernet Disk Using The LaCie Restore CD](#).



11.5 Logging Off The System via Remote Desk (Windows and Macintosh)

If you click the **Close** button of the Remote Desktop window, you'll be prompted to *disconnect* from the remote system.



It's important to understand that *disconnecting* is not the same as *logging off* the computer. When you *disconnect*, any applications you have open on the screen will still be running on the remote system. This means that you can reconnect at a later time and pick up where you left off last time. So to *log off* the system, click the **Log Off** button on the screen



doing so will have the same effect as logging off your system normally and will terminate any applications you may have opened. This is the most secure way of ending a Remote Desktop session, and is the recommended way to log off the system.

12. Troubleshooting

In the event that your LaCie Ethernet Disk is not working correctly, please refer to the following checklist to find out where the problem is coming from. If you have gone through all of the points on the checklist and your drive is still not working correctly, please have a look at the FAQs that are regularly published on our Web site – www.lacie.com. One of these FAQs may provide an answer to your specific question. You can also visit the drivers page, where the most recent software updates are available.

If you need further assistance, please contact your LaCie reseller or LaCie Technical Support (see [13. Contacting Customer Service](#) for details).

Manual Updates

LaCie is constantly striving to give you the most up-to-date, comprehensive User's Manuals available on the market. It is our goal to provide you with a friendly, easy-to-use format that will help you quickly install and utilize the many functions of your new device.

If this manual does not reflect the configurations of the product that you purchased, please check our Web site for the most current version available.

Issues

The LaCie Ethernet Disk is not seen by the LaCie Network Configurator.

Retrieving the IP address of the LaCie Ethernet Disk while in DHCP.

The LaCie Ethernet Disk can not be formatted or defragmented.

Possible Solutions

From the LaCie Network Configurator, press the **Refresh list** button and wait about a minute. If it still is not seen, your network (routers, switches, etc.) is stopping UDP broadcasts that are required for the Network Configurator to find the LaCie Ethernet Disk. In this case, connect the LaCie Ethernet Disk directly into the same hub as your workstation and try again. If this still does not work, connect your LaCie Ethernet Disk to your workstation with a crossed Ethernet cable and try again.

Use the LaCie Network Configurator. You will see all of the related information about your LaCie Ethernet Disk on the right panel of the configurator: when you open the LaCie Network Configurator, you will see a list of all of the NAS servers running on your network. When you browse through this list, all of the related information about the network, including IP addresses, will be displayed in the right panel of the window.

Important Info: *If you are operating in a Windows environment, you can use a command prompt to perform this function, instead of using the LaCie Network Configurator. Open a command prompt, and type: "ping [nas_name]", and you will see the LaCie Ethernet Disk's IP address.*

Some files may be locked due to being accessed by an operation. It is recommended that system intensive operations such as formatting and defragmenting be performed immediately after rebooting the LaCie Ethernet Disk.

Issues	Possible Solutions
How do you back up the LaCie Ethernet Disk?	<p>The LaCie Ethernet Disk can be backed up to a direct-attached hard drive using the included backup software program.</p> <p>Alternatively, the LaCie Ethernet Disk can be backed up over the network from a workstation or a remote server, with a connected backup device, such as a tape drive or hard drive.</p> <p>The easiest way to achieve this is to create a group, and then assign permission and grant access to only that particular group.</p>
How do you grant access to a few users, while restricting others, on the same network?	<p>Make sure that there is not an existing share with the same name. Go the Web Administration Page and click on the Share tab to verify that there is not a share with that same name. Even if you cannot see the share, it may exist on a removable mass storage device. If this is the case, and the device is not plugged in, the share names will still be in the registry of your LaCie Ethernet Disk. In this instance, you will need to delete the "broken share" (see 8.3.4 Deleting A Broken Share for more information) before creating the share again.</p>
A share cannot be created with a specific name.	<p>Some Windows clients are unable to recognize disk space in excess of 2GB. This only affects the display, and not the "real" available free space.</p>
Why does Windows sometimes report inaccurate free space?	<p>Install the LaCie Ethernet Disks individually, one at a time. Make sure that you change the name of the LaCie Ethernet Disk before installing the next one. There will be a conflict if the names are not unique.</p>

Issues

Error messages when attempting to transfer data.

Possible Solutions

If you are using Mac OS 9.x, all file and folder names must be less than 27 characters in length. Make sure that all file and folder names are under 27 characters. If you are operating in an environment where both Mac OS 9.x and Mac OS 10.x are being employed, the same limitation applies.

If you are using Mac OS 10.x and you get this error this may be caused by using characters in file names that Microsoft Windows operating systems do not allow. If you frequently share files with Windows-based computers, you will need to follow these naming protocols:

These characters cannot be used in share, file, folder or drive names:
? [] \ / = + < > ; : " , | *

13. Contacting Customer Support

Before You Contact Technical Support

1) Read the manuals and review section [12. Troubleshooting](#).

2) Try to isolate the problem. If possible, make the drive the only external device on the CPU, and make sure that all of the cables are correctly and firmly attached.

If you have asked yourself all of the pertinent questions in the troubleshooting checklist, and you still can't get your LaCie drive to work properly, contact us via the provided Web link. Before contacting us, make sure that you are in front of your computer and that you have the following information on hand:

- Your LaCie drive's serial number
- Operating system(Mac OS or Windows) and version
- Computer brand and model
- Names of CD or DVD drives installed on your computer
- Amount of memory installed
- Names of any other devices installed on your computer

LaCie Technical Support

LaCie Australia

Contact Us At:
<http://www.lacie.com/au/contact/>

LaCie Canada

Contact Us At:
<http://www.lacie.com/caen/contact/> (English)

LaCie Finland

Contact Us At:
<http://www.lacie.com/fi/contact>

LaCie Germany

Contact Us At:
<http://www.lacie.com/de/contact/>

LaCie Japan

Contact Us At:
<http://www.lacie.co.jp>

LaCie Norway

Contact Us At:
<http://www.lacie.com/no/contact/>

LaCie Sweden

Contact Us At:
<http://www.lacie.com/se/contact/>

LaCie United Kingdom & Ireland

Contact Us At:
<http://www.lacie.com/uk/support/request>

LaCie Grand Export

Contact Us At:
<http://www.lacie.com/intl/contact/>

LaCie Belgium

Contact Us At:
<http://www.lacie.com/be/contact/>

LaCie Denmark

Contact Us At:
<http://www.lacie.com/dk/contact/>

LaCie France

Contact Us At:
<http://www.lacie.com/fr/contact/>

LaCie Italy

Contact Us At:
<http://www.lacie.com/it/contact/>

LaCie Netherlands

Contact Us At:
<http://www.lacie.com/nl/contact/>

LaCie Spain

Contact Us At:
<http://www.lacie.com/es/support/request>

LaCie Switzerland

Contact Us At:
<http://www.lacie.com/chfr/contact>

LaCie USA

Contact Us At:
<http://www.lacie.com/contact/>

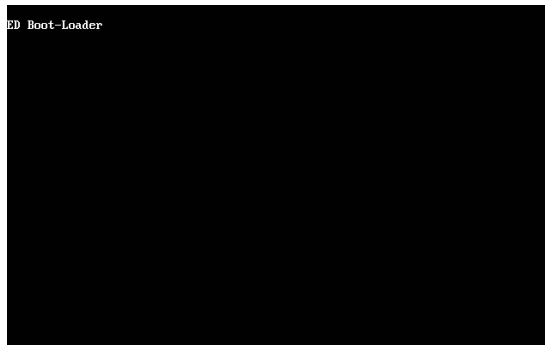
14. Restoring Your Ethernet Disk Using The LaCie Restore CD

In the event that LaCie Technical Support asks you to restore your Ethernet Disk from CD please use the steps outlined below.



Important Info: Restoring will erase all data from the Ethernet Disk; therefore whenever possible backup your data before restoring from CD.

- 1) Whenever possible first backup the data from the Ethernet Disk, and note down what version of Ethernet Disk software you are using.
- 2) Connect a monitor to the VGA video port (see Section 2.3 Rear View), a mouse to either the mouse port (Windows) or one of the Hi-Speed USB 2.0 ports, and optionally a keyboard to either the keyboard port (Windows) or one of the Hi-Speed USB 2.0 ports on the back of the Ethernet Disk.
- 3) Connect an external USB CD-ROM drive to one of the Hi-Speed USB 2.0 ports of the Ethernet Disk.
- 4) Insert the "Restore CD" and restart the Ethernet Disk.
- 5) Check that the system is booting from the CD,



NOTE: If the Ethernet Disk does not boot from the USB CD-ROM drive, Edit the BIOS configuration by pressing the "Del" button at startup and make sure that the "First Boot Device" option is set to "USB-CDROM" in the menu "Advanced BIOS Features".

Continued on next page.

6) When you see the words "**5. Ready**" displayed in **bold**,



click **Shutdown**.

7) When prompted, disconnect the USB CD-ROM drive, and restart the system by pressing the power button on the front of the Ethernet Disk.



Important Info: The system will put itself through a number of reboots; DO NOT interrupt the system during these reboots.

After the final reboot the system will display the LaCie Ethernet Log On Screen.



When the Ready Light on the front of the Ethernet Disk comes on, the restore process is complete.

8) Use the LaCie Network Configurator to configure your Ethernet Disk.

9) Using a Web browser access the Ethernet Disk and apply any LaCie Ethernet Disk software updates needed to restore the Ethernet Disk software up to the latest version.

10) Finally, restore your data from backup.

15. Warranty

LaCie warrants your drive against any defect in material and workmanship, under normal use, for the period designated on your warranty certificate. In the event this product is found to be defective within the warranty period, LaCie will, at its option, repair or replace the defective drive.

This warranty is void if:

- The drive was operated/stored in abnormal use or maintenance conditions;
- The drive is repaired, modified or altered, unless such repair, modification or alteration is expressly authorized in writing by LaCie;
- The drive was subjected to abuse, neglect, lightning strike, electrical fault, improper packaging or accident;
- The drive was installed improperly;
- The serial number of the drive is defaced or missing;
- The broken part is a replacement part such as a pickup tray, etc.
- The tamper seal on the drive casing is broken.

LaCie and its suppliers accept no liability for any loss of data during the use of this device, or for any of the problems caused as a result.

LaCie will not, under any circumstances, be liable for direct, special or consequential damages such as, but not limited to, damage or loss of property or equipment, loss of profits or revenues, cost of replacement goods, or expense or inconvenience caused by service interruptions.

Any loss, corruption or destruction of data while using a LaCie drive is the sole responsibility of the user, and under no circumstances will LaCie be held liable for the recovery or restoration of this data.

Under no circumstances will any person be entitled to any sum greater than the purchase price paid for the drive.

To obtain warranty service, call LaCie Technical Support. You will be asked to provide your LaCie product's serial number, and you may be asked to furnish proof of purchase to confirm that the drive is still under warranty.

All drives returned to LaCie must be securely packaged in their original box and shipped with postage prepaid.



Important Info: Register online for free technical support: www.lacie.com/register

Glossary

Backup – (1) The act of creating at least one additional copy of data onto a different (and safe) storage device from where it can be retrieved at a later time if needed. (2) A copy of a file, directory, or volume on a separate storage device from the original, for the purposes of retrieval in case the original is erased, damaged, or destroyed.

Bit – The smallest measure of computerized data, either a 1 or a 0. Eight bits equal one byte, or one character.

Block – A very small section of the storage media comprised of one or more sectors. A block is the smallest amount of space allocated on a drive for data storage. By default, a sector of data consists of 512 bytes.

Buffer – RAM cache that is faster than the data that is being delivered. Buffers are used so data may be stored and delivered to the receiving item as it is needed.

Bus – Electronic links that enable data to flow between the processor, RAM and extension cables (peripherals).

Byte – A sequence of adjacent binary digits, or bits, considered as a unit, 8 bits in length. There are 8 bits in 1 byte. See also MB (Megabyte) or GB (Gigabyte).

Cache, -ing – This is an area of electronic storage (usually RAM) set aside to store frequently used data from electro-mechanical storage (hard drives, floppy disks, CD/DVD-ROM, tape cartridges, etc.) Therefore, storing frequently used data in RAM can enhance your system's overall response to disk-intensive operations significantly.

Configuration – When talking about a PC, configuration is understood to be the sum of the internal and external components of the system, including memory, disk drives, the keyboard, the video subsystem and other peripherals, such as the mouse, modem or printer. The configuration also implies software: the operating system and various device managers (drivers), as well as hardware settings and options set by the user via configuration files.

Controller – This is a component or an electronic card (referred to in this case as a "controller card") that enables a computer to communicate with or manage certain peripherals. The controller manages the operation of the peripheral associated with it, and links the PC bus to the peripheral via a ribbon cable inside the PC. An external controller is an expansion card which fills one of the free slots inside your PC and which enables a peripheral (CD-ROM drive, scanner or printer, for instance) to be connected to the computer.

Cross-platform – Term that refers to a device that is able to be operated by both Mac and Windows operating systems.

Data Stream – The flow of data that accomplishes a task, usually related to moving data from storage to computer RAM or between storage devices.

Digital – Discrete information that can be broken down to zero or one bits.

Driver (peripheral manager) – A software component that enables the computer system to communicate with a peripheral. Most peripherals will not operate correctly – if at all – if the appropriate drivers are not installed on the system.

DHCP (Dynamic Host Configuration Protocol) – This is a communications protocol that allows network administrators to centrally manage and automate the assignment of Internet Protocol (IP) addresses in an organization's network. Using IP, each computer that connects to the Internet must have a unique IP address.

Ethernet – A LAN technology, based on the IEEE 802.3 standard. The most common Ethernet systems are 10BASE-T, which provides transmission speeds up to 10Mb/s, and 100BASE-T (also known as Fast Ethernet), which provides transmission speeds up to 100Mb/s, and Gigabit which provides 1000Mb/s (see also Gigabit Ethernet below).

File System – Links the physical map of a disc to its logical structure. Thanks to the file system, users and computers can easily display path, directories and files recorded onto the disc.

FTP (File Transfer Protocol) – This is a standard Internet protocol that uses the Internet's TCP/IP protocols to exchange files between computers on the Internet. It is commonly used to download programs and other files to a computer from a server.

Firmware – Permanent or semi-permanent instructions and data programmed directly into the circuitry of a programmable read-only memory or an electronically-erasable, programmable read-only memory chip. Used for controlling the operation of the computer or tape drive. Distinct from the software, which is stored in random access memory and can be altered.

Folder – A list created on a disk to store files. Creating folders and sub-folders enables you to organize the storage of your files in a logical, hierarchical manner so that you can find and manage them more easily.

Format, -ting, -ted – This is a process where a device is prepared to record data. In this process, the hard disk writes special information onto its own recording surfaces into areas (blocks) that are ready to accept user data. Since this operation causes all current user data stored on the hard disk to be lost, this is an infrequent operation that usually only happens at the factory that created the hard disk. It is unusual for something to happen to a hard disk that requires the end-user to initially perform this operation.

Gigabit – Unit of measure, commonly used to express the amount of data in one second between two points. E.g. in the term **Gigabit Ethernet** – 1 gigabit per second (1 Gbps) equals 1 billion bits per second and is equivalent to 1000Mb/s.

GB (GigaByte) – This value is normally associated with data storage capacity. Basically, it means a thousand million or a billion bytes. In fact, it equals 1,073,741,824 bytes (or 1,024 x 1,024 x 1,024).

Hardware – Physical components of a computer system, including the computer itself and peripherals such as printers, modems, mice, etc.

Host Bus Adapter (HBA) – A printed circuit board that installs in a standard microcomputer and an interface between the device controller and the computer. Also called a controller.

http (Hypertext Transfer Protocol) – This is the set of rules for exchanging files (i.e. text, images, audio, video, etc.) on the World Wide Web. http is an application protocol, relative to the TCP/IP suite of protocols that form the basis for exchanging information on the Internet.

Initialize, -ed, Initialization – After a hard drive (or other storage device) is formatted and partitioned, some special data needs to be written to it that helps the Mac and Windows create files and save data. The process is called initialization. This process, like formatting, causes all user data on the storage device to be lost.

Internet – A collection of networks whose users communicate with one another. Each communication carries the address of the source and destination networks and the particular machine within the network associated with the user or host computer on each end.

IP (Internet Protocol) – This is the protocol that controls how data is sent from one computer to another on the Internet.

IP Address – This is a number (either 32-bit for Internet Protocol Version 4, or 128-bit for Internet Protocol Version 6) that identifies each sender or receiver of information that is sent in packets across the Internet.

Interface – The protocol data transmitters, data receivers, logic and wiring that link one piece of computer equipment to another, such as a hard drive to an adapter or an adapter to a system bus. Protocol means a set of rules for operating the physical interface, such as: do not read or write before the drive is ready.

I/O (Input/Output) – Refers to an operation, program or device whose purpose is to enter data into or to extract data from a computer.

Kb (Kilobit) – Equivalent to 1,000 bits.

Kb/s – Kilobits per second. 480Kb/s is equal to 60KB/s.

KB (KiloByte) – Basically, this means 1,000 bytes, but it is actually 1,024 bytes.

KB/s – Kilobytes per second. A means of measuring throughput.

LAN (Local Area Network) – A group of computers and associated devices that share a common communication line and typically share the resources of a single processor or server within a small geographic area.

Mb (Megabit) – Equivalent to 1,000,000 bits.

Mb/s – Megabits per second. A means of measuring throughput. 480Mb/s is equal to 60MB/s.

MB (Megabyte) – Basically means one million bytes, but is actually 1,024 Kilobytes or 1,024 x 1,024 bytes, which equals 1,048,576 bytes.

MB/s – Megabytes per second. A means of measuring throughput.

Media – The material or device used to store information in a storage subsystem, such as a tape cartridge, CD, DVD or disk drive.

Network – A series of points or nodes interconnected by communication paths. Networks can interconnect with other networks and contain subnetworks.

Operating System (OS) – Software that controls the assignment and use of hardware resources such as memory, processor time, disk space and peripherals. An operating system is the basis on which software (applications) run. Windows, Mac OS and UNIX are among the most common.

Overwrite – To write data on top of existing data thus erasing the original data.

Partition, -ing – After formatting, the hard drive is not yet ready to store files. It must be divided into sections that will contain special information required for a Mac or PC to operate and other sections that will contain the files. This process of dividing up the hard drive is called partitioning. A partition is just one section of the hard drive that will contain either special data put there by Silverlining or other files and data.

Peripheral – A generic term applied to printers, scanners, mice, keyboards, serial ports, graphics cords, disk drives and other computer subsystems. This type of peripheral often relies on its own control software, known as a peripheral driver.

Port, hardware – A connection component (SCSI port, for example) that enables a microprocessor to communicate with a compatible peripheral.

Port, number – Used to identify a specific process to which an Internet or other network message is to be forwarded when it arrives at a server.

Port, software – A memory address that identifies the physical circuit used to transfer information between a microprocessor and a peripheral.

Protocol – In IT terminology, this describes the special set of rules that end points in a telecommunication connection use when they communicate.

RAM (Random Access Memory) – Generally referred to as a computer's "memory." An integrated circuit memory chip that allows information to be stored and retrieved by a microprocessor or controller. The information can be stored or accessed in any order, and all storage locations are equally accessible.

Seek Time – The amount of time (in thousandths of a second, or milliseconds) that it takes a hard drive's read/write head to move to a specific location on the disk. Average seek, then, is the average of a large number of random samplings all over the disk. Seek time is CPU independent, meaning that seek time is the same for a disk drive, whether it is attached to a computer or not.

Software – In a nutshell, software is a set of instructions for the computer. A set of instructions to perform a particular task is called a program. There are two main types of software: system software (an operating system such as Mac OS or Windows) which controls the operation of the computer and application software (programs such as Word or Excel) which enable users to perform tasks such as word processing, spreadsheet creation, graphics, etc.

Storage – In computers, any equipment in which information may be kept. PCs generally use disk units and other external storage media (diskettes, CD-ROMs, magnetic disks, etc.) for permanent storage of information.

Striping – Spreading data evenly over multiple disk drives to enhance performance. Data striping can be performed on a bit, byte or block basis for optimum application performance.

Subnetwork (Subnet) – This is a separate, identifiable part of a network, such as all of the computers at one geographic location, in one building or on the same local area network. Subnets make it possible to have an organization's network connected to the Internet with a single, shared network address.

Transfer Rate – The rate at which the drive sends and receives data from the controller. Transfer rates for reading data from the disk drive may not be the same as the transfer rate for writing data to the disk drive. Transfer rates are CPU dependent, meaning that regardless of how great a transfer rate your drive is capable of, the actual transfer rate can only be as fast as the slowest of your hard drive and computer.

TCP/IP (Transmission Control Protocol/Internet Protocol) – This is the basic communication protocol of the Internet. TCP/IP uses the client/server model of communication, in which a client (a computer user) requests and is provided a service (such as a Web page) by another computer (a server) in the network.

Volume – A desktop mountable storage area, may be a partition of a hard drive, a removable disk or a cartridge. Typically measured in Megabytes or Gigabytes.

UDP (User Datagram Protocol) – This is a communications protocol that allows a limited amount of service when messages are exchanged between computers in a network that uses the Internet Protocol (IP). UDP uses the IP to get a data unit (a datagram) from one computer to another, but does not sequence the packets that the data arrives in. UDP also provides port numbers to distinguish different user requests, and an optional checksum capability to verify that the data arrived intact.

Utility – Software designed to perform maintenance tasks on the system or its components. Examples include backup programs, programs to retrieve files and data on disk, programs for preparing (or formatting) a disk or and resource editors.